

Dairy Products Prices

Released March 5, 2010, by the National Agricultural Statistics Service (NASS), Agricultural Statistics Board, U.S. Department of Agriculture. For information on *Dairy Products Prices* call Joe Gaynor at 202-690-2168, office hours 7:00 a.m. to 4:30 p.m. ET.

Dairy Products Prices Highlights

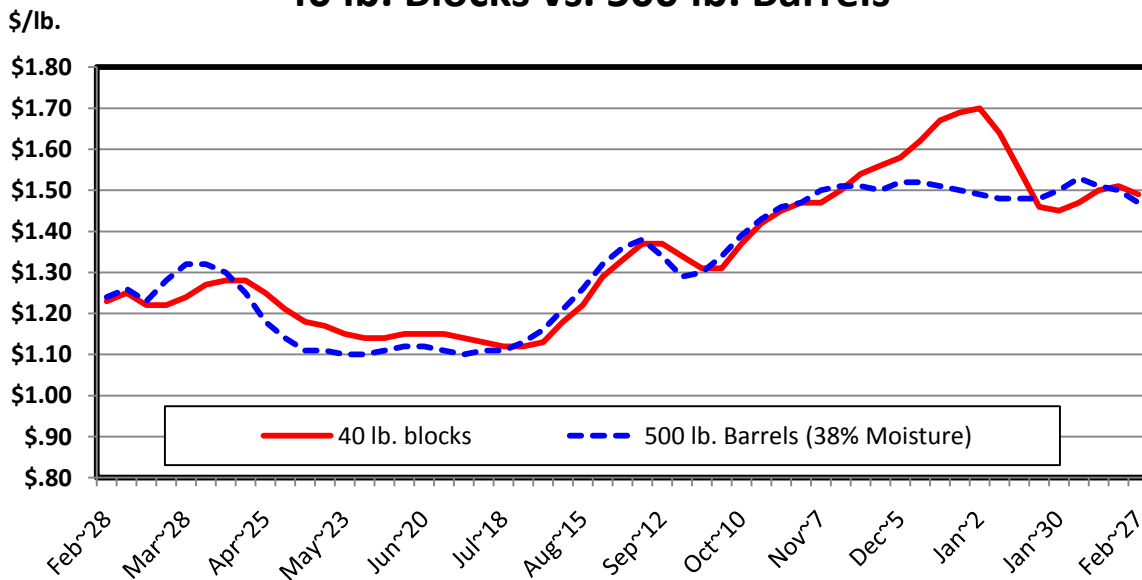
Cheddar Cheese prices received for U.S. 40 pound Blocks averaged \$1.49 per pound for the week ending February 27. The price per pound decreased 1.4 cents from the previous week. The price for U.S. 500 pound Barrels adjusted to 38 percent moisture averaged \$1.47 per pound, down 3.4 cents from the previous week.

Butter prices received for 25 kilogram and 68 pound boxes meeting USDA Grade AA standards averaged \$1.36 per pound for the week ending February 27. The U.S. price per pound increased 1.9 cents from the previous week.

Nonfat Dry Milk prices received for bag, tote and tanker sales meeting USDA Extra Grade or USPH Grade A standards averaged \$1.04 per pound for the week ending February 27. The U.S. price per pound decreased 2.5 cents from the previous week.

Dry Whey prices received for bag, tote and tanker sales meeting USDA Extra Grade standards averaged 38.9 cents per pound for the week ending February 27. The U.S. price per pound decreased 0.5 cents from the previous week.

Cheddar Cheese Prices, U.S. 40 lb. Blocks vs. 500 lb. Barrels



Cheddar Cheese Prices by Style and Region

| Style and Region | Week Ending | | | | |
|-------------------------------|-----------------|-----------------|-----------------|-----------------|-----------------|
| | Feb 27, 2010 | Feb 20, 2010 | Feb 13, 2010 | Feb 6, 2010 | Jan 30, 2010 |
| | <i>Dol./Lb.</i> | <i>Dol./Lb.</i> | <i>Dol./Lb.</i> | <i>Dol./Lb.</i> | <i>Dol./Lb.</i> |
| 40 Lb. Blocks | | | | | |
| Avg. Price ¹ | | | | | |
| MN/WI | 1.5487 | 1.5825 | *1.5710 | *1.5372 | *1.5315 |
| Oth Sts | 1.4856 | 1.4989 | 1.4958 | 1.4674 | 1.4367 |
| US | 1.4921 | 1.5059 | *1.5022 | *1.4740 | *1.4497 |
| | <i>Pounds</i> | <i>Pounds</i> | <i>Pounds</i> | <i>Pounds</i> | <i>Pounds</i> |
| Sales Volume ² | | | | | |
| MN/WI | 1,257,263 | 863,501 | *868,971 | *998,096 | *1,575,936 |
| Oth Sts | 10,963,510 | 9,502,269 | 9,277,412 | 9,522,497 | 9,939,258 |
| US | 12,220,773 | 10,365,770 | *10,146,383 | *10,520,593 | *11,515,194 |
| | <i>Dol./Lb.</i> | <i>Dol./Lb.</i> | <i>Dol./Lb.</i> | <i>Dol./Lb.</i> | <i>Dol./Lb.</i> |
| 500 Lb. Barrels | | | | | |
| Avg. Price ¹ | | | | | |
| MN/WI | 1.5240 | 1.5717 | 1.5785 | 1.6065 | 1.5788 |
| Oth Sts | 1.5405 | 1.5700 | 1.5891 | 1.6026 | 1.5865 |
| US | 1.5316 | 1.5709 | 1.5838 | 1.6044 | 1.5827 |
| Price Adj. to 38% Moisture | | | | | |
| MN/WI | 1.4623 | 1.5050 | 1.5163 | 1.5370 | 1.5108 |
| Oth Sts | 1.4706 | 1.4954 | 1.5035 | 1.5159 | 1.4945 |
| US | 1.4661 | 1.5005 | 1.5098 | 1.5256 | 1.5024 |
| | <i>Pounds</i> | <i>Pounds</i> | <i>Pounds</i> | <i>Pounds</i> | <i>Pounds</i> |
| Sales Volume ² | | | | | |
| MN/WI | 4,615,205 | 4,455,852 | 4,496,980 | 4,874,347 | 4,422,477 |
| Oth Sts | 3,935,776 | 3,865,495 | 4,517,308 | 5,633,988 | 4,638,444 |
| US | 8,550,981 | 8,321,347 | 9,014,288 | 10,508,335 | 9,060,921 |
| | <i>Percent</i> | <i>Percent</i> | <i>Percent</i> | <i>Percent</i> | <i>Percent</i> |
| Moisture Content | | | | | |
| MN/WI | 35.38 | 35.25 | 35.46 | 35.20 | 35.21 |
| Oth Sts | 35.05 | 34.91 | 34.47 | 34.45 | 34.18 |
| US | 35.23 | 35.09 | 34.96 | 34.80 | 34.68 |

* Revised.

¹ Prices weighted by volumes reported.

² Sales as reported by participating manufacturers.

Butter Prices

| Region | Week Ending | | | | |
|---------------------------|-----------------|-----------------|-----------------|-----------------|-----------------|
| | Feb 27, 2010 | Feb 20, 2010 | Feb 13, 2010 | Feb 6, 2010 | Jan 30, 2010 |
| | <i>Dol./Lb.</i> | <i>Dol./Lb.</i> | <i>Dol./Lb.</i> | <i>Dol./Lb.</i> | <i>Dol./Lb.</i> |
| Avg. Price ¹ | | | | | |
| US | 1.3592 | 1.3407 | 1.3503 | 1.3922 | *1.4031 |
| | <i>Pounds</i> | <i>Pounds</i> | <i>Pounds</i> | <i>Pounds</i> | <i>Pounds</i> |
| Sales Volume ² | | | | | |
| US | 6,205,539 | 2,752,089 | 3,768,257 | 3,381,245 | 5,101,290 |

* Revised.

¹ Prices weighted by volumes reported.

² Sales as reported by participating manufacturers.

Nonfat Dry Milk Prices

| Region | Week Ending | | | | |
|---------------------------------|-----------------------------|-----------------------------|-----------------------------|-----------------------------|-----------------------------|
| | Feb 27, 2010 | Feb 20, 2010 | Feb 13, 2010 | Feb 6, 2010 | Jan 30, 2010 |
| Avg. Price ¹ US | <i>Dol./Lb.</i> 1.0448 | <i>Dol./Lb.</i> 1.0697 | <i>Dol./Lb.</i> 1.1417 | <i>Dol./Lb.</i> 1.1447 | <i>Dol./Lb.</i> 1.1325 |
| Sales Volume ² US | <i>Pounds</i> 34,313,453 | <i>Pounds</i> 16,906,986 | <i>Pounds</i> 12,603,624 | <i>Pounds</i> 10,759,162 | <i>Pounds</i> 23,092,321 |

¹ Prices weighted by volumes reported.

² Sales as reported by participating manufacturers.

Dry Whey Prices

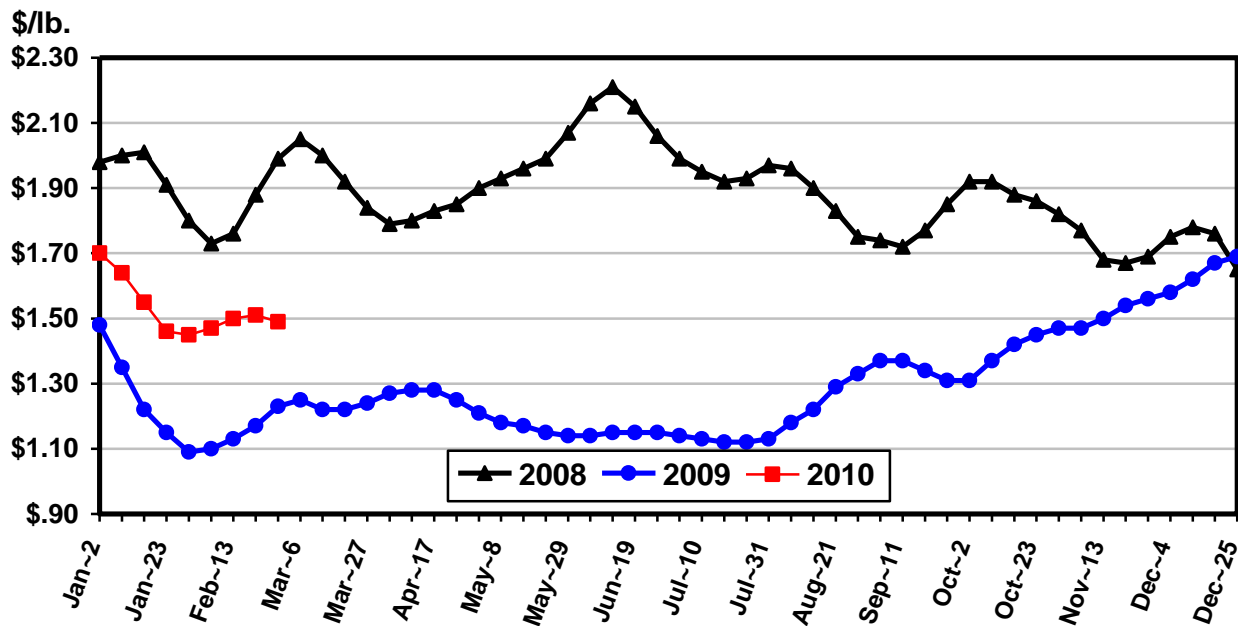
| Region | Week Ending | | | | |
|---------------------------------|-----------------------------|------------------------------|-----------------------------|-----------------------------|-----------------------------|
| | Feb 27, 2010 | Feb 20, 2010 | Feb 13, 2010 | Feb 6, 2010 | Jan 30, 2010 |
| Avg. Price ¹ US | <i>Dol./Lb.</i> 0.3894 | <i>Dol./Lb.</i> 0.3946 | <i>Dol./Lb.</i> 0.3960 | <i>Dol./Lb.</i> 0.3900 | <i>Dol./Lb.</i> 0.3894 |
| Sales Volume ² US | <i>Pounds</i> 10,547,029 | <i>Pounds</i> *11,362,749 | <i>Pounds</i> 10,512,461 | <i>Pounds</i> 11,730,159 | <i>Pounds</i> 12,151,701 |

* Revised.

¹ Prices weighted by volumes reported.

² Sales as reported by participating manufacturers.

Cheddar Cheese Prices, U.S. 40 lb. Blocks



Procedures and Reliability: The Weekly Dairy Product Prices program consists of 20 plants reporting 40 pound cheddar blocks, 16 plants reporting 500 pound cheddar barrels, 23 plants reporting butter, 38 plants reporting nonfat dry milk, and 23 plants reporting dry whey. There are 7 plants in the Minnesota/Wisconsin Region reporting 40 pound cheddar blocks and 10 plants in the Minnesota/Wisconsin Region reporting 500 pound cheddar barrels. Plants counts are by commodity, plants reporting multiple commodities are represented in each commodity. Price information included in this report is provided each week by manufacturers of these products. Data are collected by fax and electronic mail each week for the previous week. The Agricultural Marketing Service (AMS) conducts on-site plant reviews. Price information collected is for the (wholesale) initial point of sale for:

- **Cheddar cheese in 40 pound blocks**, colored between 6 and 8 on the National Cheese Institute color chart, meeting Wisconsin State Brand, USDA Grade A, or better standards.
- **Cheddar cheese in 500 pound barrels**, white, meeting Wisconsin State Brand, USDA Grade A, or better standards.
- **Salted butter (80% butterfat)**, fresh or storage, in 25 kilogram and 68 pound boxes meeting USDA Grade AA standards.
- **Non-fortified, nonfat dry milk** in 25 kilogram bags, 50 pound bags, totes, and tankers meeting USDA Extra Grade or USPH Grade A standards.
- **Edible non-hygroscopic dry whey** in 25 kilogram bags, 50 pound bags, totes, and tankers meeting USDA Extra Grade standards.

A transaction is complete when the product is “**shipped out**” and “**title transfers.**” Re-sales of purchased product, forward pricing and intra-company sales are excluded. A complete list specifications and Dairy Products Prices Questions and Answers are found at: http://www.nass.usda.gov/Data_and_Statistics/Dairy_Products_Mandatory_Program/index.asp

Revision Policy: Dairy Products Prices information is subject to revisions to the previous four weeks. The previous two calendar years of estimates for the weekly dairy products prices are subject to verification by AMS.

The U.S. Department of Agriculture (USDA) prohibits discrimination in all its programs and activities on the basis of race, color, national origin, age, disability, and where applicable, sex, marital status, familial status, parental status, religion, sexual orientation, genetic information, political beliefs, reprisal, or because all or part of an individual's income is derived from any public assistance program. (Not all prohibited bases apply to all programs.) Persons with disabilities who require alternative means for communication of program information (Braille, large print, audiotape, etc.) should contact USDA's TARGET Center at (202) 720-2600 (voice and TDD).

To file a complaint of discrimination, write to USDA, Director, Office of Civil Rights, 1400 Independence Avenue, S.W., Washington, D.C. 20250-9410, or call (800) 795-3272 (voice) or (202) 720-6382 (TDD). USDA is an equal opportunity provider and employer.

ACCESS TO REPORTS!!

For your convenience, there are several ways to obtain NASS reports, data products, and services:

INTERNET ACCESS

All NASS reports are available free of charge. For free access, connect to the Internet and go to the NASS Home Page at www.nass.usda.gov.

E-MAIL SUBSCRIPTION

All NASS reports are available by subscription free of charge direct to your e-mail address. Starting with the NASS Home Page at www.nass.usda.gov, under the right navigation, *Receive reports by Email*, click on **National** or **State**. Follow the instructions on the screen.

PRINTED REPORTS OR DATA PRODUCTS

CALL OUR TOLL-FREE ORDER DESK: 800-999-6779 (U.S. and Canada)
Other areas, please call 703-605-6220 FAX: 703-605-6900
(Visa, MasterCard, check, or money order acceptable for payment.)

ASSISTANCE

For **assistance** with general agricultural statistics or further information about NASS or its products or services, contact the **Agricultural Statistics Hotline** at **800-727-9540**, 7:30 a.m. to 4:00 p.m. ET, or e-mail: nass@nass.usda.gov.