

American Farm Bureau Federation

AFBF 93rd Annual Meeting
January 8 – 11, 2012
Honolulu, Hawai'i



prepared exclusively by

**Island
Partners
Hawai'i**

A Premier Destination Management Company





Aloha Farm Bureau!



Welcome to Paradise!

The fresh, floral air energizes you. The warm, tranquil waters refresh you. The breathtaking, natural beauty renews you. There's no place on earth like Hawai'i . We warmly invite AFBF attendees to explore our islands and discover your ideal travel experience.

This special brochure was created to help you enhance your overall experience at AFBF's 93rd Annual Meeting here in Honolulu, Hawai'i.

- ◆ O'ahu Optional Tours & Activities (offered on January 7th and 10th) ...comprehensive collection of quality activity selections designed to offer thrilling, remarkable and spectacular experiences.
- ◆ Oahu Farm Tours (also offered on January 7th and 10th) ... created exclusively for AFBF attendees, showcase the surprising diversity of O'ahu's farm and agricultural operations. An opportunity to visit, meet and interact with our island farming community and experience our outstanding "farm to table" cuisine.
- ◆ Pre and Post 'AFBF Annual Meeting' One and Two Island Packages...customized just for you, these special, one-of-a-kind experiences provide an amazing insider look into the life and land of our unique neighbor islands –Kaua'i , Maui and Hawai'i Island.

NOTE: Sign-up opportunities will be provided by AFBF via its official website or through your state offices. Tour registration will open on Monday, September 12, 2011. We encourage you to reserve early, as space is limited!

O'ahu the gathering place

Like the hub of a great Pacific Basin wheel, O'ahu allows life to revolve around it. Tourist haven, surfing mecca, bustling business and commerce center, filmmakers favorite, strategic military location, active nightlife, cultural and historical significance. Each part of this Island has a distinct quality that does not necessarily give one the entire picture. O'ahu is a pleasing mixture of urban sophistication, tradition, and gentleness. Metropolitan and cosmopolitan, frenetic energy bounded by a laid back sense of place.

Waikīkī, "spouting waters", is the gateway to discover the diversity of O'ahu. Historical and cultural sites abound, including Pearl Harbor, 'Iolani Palace, Aloha Tower, Punchbowl, Chinatown, Nu'uauu Pali, Bishop Museum, and the Polynesian Cultural Center. The winter months signal the return of the humpback whales to Hawai'i and bring surfers from around the globe to challenge the power of monstrous North Shore surf. Ala Moana Center, Aloha Tower Marketplace, Waikīkī Beachwalk and The Royal Hawaiian Center attract shoppers like moths to a flame.



ALOHA TOWER

Once the tallest structure on O'ahu, it greeted many passenger ships during the grand "Boat Days" of the 1920s and 1930s.

ARIZONA MEMORIAL / PEARL HARBOR

The Arizona Memorial commemorates the brave U.S. Servicemen who gave their lives in World War II. Next to it stands the USS Missouri, where the treaty ending World War II was signed.

DIAMOND HEAD AND WAIKĪKĪ BEACH

Two of Hawai'i's most famous landmarks. Diamond Head Crater provides a stunning view of the ocean from its summit.

BISHOP MUSEUM

The world's largest repository of Hawaiian and Polynesian artifacts.

DOLE PLANTATION

Once the largest pineapple plantation in the islands, it still grows a wealth of tropical fruits and plants.

HALE'IWA TOWN

On O'ahu's North Shore, Haleiwa is often known as "the surfing capital of the world."

'IOLANI PALACE

The only palace on U.S. soil, built in 1882, was home to two monarchs before Hawai'i became the 50th state.

O'AHU OPTIONAL TOURS & ACTIVITIES

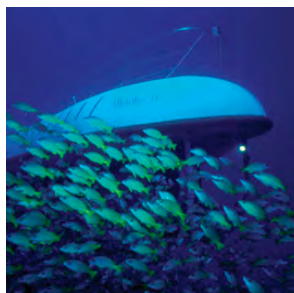
O'ahu offers a collection of quality activity selections designed to offer thrilling, remarkable and spectacular experiences. From ocean encounters and eco-adventures to guided, interactive touring, each unique activity is certain to become an unforgettable island memory... Following is a sample of O'ahu's more popular attractions from which to choose.

Important Optional Activity Notes:

- Reserve Early as activities are popular and often sell-out in advance
- Offered on a non-hosted and non-exclusive basis (some require minimum # of participants)
- All rates are inclusive of Hawai'i State Tax and Fees but do not include gratuities
- Activity components and timing are subject to change by vendor
- Activity availability and pricing confirmed at time of booking
- Cancellation penalties will apply for no-shows

**All Optional Tours
are Available
Saturday 1/7/2012 &
Tuesday 1/10/2012**

Submarine Adventure



Journey to the undersea world of Jules Verne and Jacques Cousteau in air-conditioned comfort aboard a 48-passenger submarine. Viewing ports allow a clear view of the mysterious sea world inhabitants. Full color fish pictorials assist in the identification of varied species including the famed humuhumunukunukuāpua'a (Hawaiian trigger fish).

At a depth of 15 fathoms, you will glide over coral reefs and seaweed gardens. Colorful schools of fish and menacing moray eels stare back at you from their underwater palaces. Spiked sea urchins and shy octopus dance a salt water ballet. The co-pilot will provide a watery narrative of aquatic sights and sounds.

\$106.63 per adult

\$48.47 per child

(36" – 12 yrs.)

Maximum 48 people per dive

Tour times available:

Tour #1: 7:00 am

Tour #2: 12:00 pm

PRICE INCLUDES:

- Non-exclusive air-conditioned transportation from select Waikiki hotels
- 45-minute submarine dive
- Hawai'i State tax & 3% Harbor fee
- Island Partners Hawai'i coordination

PLEASE NOTE:

Check-in 30-minutes prior to tour time at the Atlantis Submarine ticket booth at the Hilton Hawaiian Village Ali'i Tower next to the Tropics Café • Minimum height requirement is 36 inches • Passengers must be physically able of ascending and descending a near vertical 7-step ladder to enter and exit the submarine

Riding a Wave • Surfing Lessons



Hawai'i's distinguished sportsman Duke Kahanamoku used surfing as part of his training regime, earning Olympic gold medals in the process. Surfing is Hawai'i's gift to the sports world. He'e nalu, riding a wave, is an experience that once enjoyed, will never be forgotten. It's a feeling of being connected to the ocean, a feeling of kinship and freedom. O'ahu's best surf instructors and firefighters perpetuate this ancient sport with aloha and a safety-first attitude. Yes, your instructors are all Honolulu City Firefighters. Their patient and comprehensive instructional method will get you up and "hanging ten" in no time as well as providing a worry free environment to really enjoy an awesome and exhilarating experience. Grab your board, surf's up!

\$114.14 per adult

\$103.56 per youth

(11 – 17 yrs.)

\$145.54 per child

(5 – 10 yrs.)

Maximum 14 people per lesson

Times available:

Lesson #1: 7:00 am

Lesson #2: 9:30 am

PRICE INCLUDES:

- Non-exclusive round-trip transportation between hotel and surfing area
- Non-exclusive two hour surfing lesson
- Use of soft top long board surfboard with a surf leash
- Use of long sleeve rash guard and reef "walkers" (shoes)
- Personable instructors, first-aid and CPR certified
- Bottled water
- Hawai'i State tax & Island Partners Hawai'i coordination

PLEASE NOTE:

This surfing lesson is held at Kalaeloa Beach. Kalaeloa has consistent surf year 'round and is best suited for lessons. • Waikiki is normally flat or without surf from November – April • Participants should be in good physical condition • Participants should be good swimmers and be comfortable in the water • Student ratio is 1:3 • No pregnant women please • Wear swimsuit & bring sunscreen; recommended attire for women is a one-piece type swimsuit or bikini top w/ board shorts • Children under 10 yrs. require a private lesson with an instructor / student ratio of 1:1

Catamaran Tradewind Sail



Warm water, blue sky and fun times await onboard the 44-foot, state-of-the-art catamaran Maita'i. Sister to the Legendary catamaran Lē'ahi, Maita'i is one of the fastest sailing catamarans on O'ahu. Slicing through the waves or surfing the swells off world-famous Waikīkī Beach, you'll know that you are onboard an exceptional vessel with a professional crew. The breathtaking views of the rainbow-kissed Ko'olau Mountain Range, Diamond Head, and the cityscape of Honolulu are memorable. Keep a sharp lookout for nai'a and honu – spinner dolphin and turtle – just some of the sea's beautiful creatures. It's a great way to experience the sea - with the Maita'i.

\$28.00 per adult
\$14.00 per child (4-12 yrs.)
 Maximum 47 people per sail

Tour times available:

11:00 am
 1:00 pm
 3:00 pm

PRICE INCLUDES:

- Non-exclusive 1½ hr. Tradewind Sail
- Hawai'i State tax and Island Partners Hawai'i coordination

PLEASE NOTE:

Check-in 15-minutes prior to sail time on the beach between the Halekūlani and Sheraton Waikīkī hotels • Transportation to the beach between the Halekūlani and Sheraton Waikīkī hotels is not included • Please wear appropriate clothing that may get wet. This is a barefoot sail – shoes will be stored on the beach • Wear and use sunblock • Beverages - Mai tai's, beer, wine, juice, soft drinks - are available for purchase onboard • Participants should be in good physical condition with no significant health problems or concerns • This event is not suggested for children under 4 years old

Sunset Dinner Cruise



Cooling sea breezes gently caress as guests witness a spectacular sunset onboard the 232-foot long, 4-deck cruise ship "Star of Honolulu". As the setting sun turns the sky into a natural masterpiece of pastel beauty, the evening begins with a unique pier-side welcome hula.

Star of Honolulu offers a choice of dining and entertainment options (see below). Dinner is a choice of a three-course affair featuring Sirloin Steak and Crab (STAR Package) or a bountiful Roast Beef Buffet (PACIFIC STAR BUFFET Package), with their corresponding entertainment options of the magical "My Hawai'i – Lei of Memories" dinner show or the Polynesian Journey performance, with audience participation and dancing. After dinner the darkening sky allows the glittering lights of Waikīkī and the Diamond Head Gold Coast to come alive. Guests top off the evening with some dancing as the lights of Honolulu sparkle in the distance.

\$100.50 per adult
\$65.00 per child (ages 3 - 11)

4:20 pm Depart Hotel(s)
 5:15 pm Arrive/Board
 5:30 pm Sunset Dinner Cruise
 7:45 pm Depart Harbor
 8:00 pm Return to Hotel(s)

Pacific Star Sunset Buffet

\$90.00 per adult
\$58.50 per child (ages 3 - 11)

STAR PACKAGE INCLUDES:

- Air-conditioned transportation
- (1) Welcome Mai Tai
- 3-Course Dinner
- Entertainment – My Hawai'i – Lei of Memories – an original show featuring the largest cast on island waters
- Hawai'i State tax and 3% Harbor fee
- Island Partners Hawai'i coordination

PACIFIC STAR PACKAGE INCLUDES:

- Air-conditioned transportation
- (1) Welcome Mai Tai
- Buffet Dinner
- Entertainment – Polynesian Journey Show - relaxing Hawaiian music, strolling musicians, audience participation and dancing
- Hawai'i State tax and 3% Harbor fee
- Island Partners Hawai'i coordination

PLEASE NOTE:

Star of Honolulu is an A.D.A. compliant ship • Additional premium beverages, wine and champagne are available for purchase • Special Menu Dietary options – Vegan, etc. - are available with at least 24-hour prior notice • Attire – casual; shorts are not recommended • A light jacket or sweater is suggested

USS Arizona Memorial Excursion



World history was forever changed during the early morning hours of December 7, 1941 with the attack on Pearl Harbor. Today the National Park Service administers this historical site. Military exhibits and artifacts are proudly displayed, along with the incredible tales of heroism performed that fateful day. A documentary film will set the mood before a short boat ride out to the Arizona Memorial. This solemn white structure stands eternal watch over the 1,177 sailors and marines that perished onboard the USS Arizona, together forever in a watery tomb.

\$24.08 per adult
\$21.99 per child (ages 1 - 11)

Tour 1
 6:15 am Depart Hotel(s)
 10:30 am Return to Hotel(s)

Tour 2
 8:45 am Depart Hotel(s)
 12:45 pm Return to Hotel(s)

PRICE INCLUDES:

- Air-conditioned transportation
- Narrated Tour by State of Hawai'i Certified Driver Tour Guide
- USS Arizona Memorial Tour as conducted by the National Park Service
- Hawai'i State tax
- Island Partners Hawai'i coordination

PLEASE NOTE:

The USS Arizona Memorial Tour is managed by the U.S. National Park Service and is facilitated on a first-come-first-served basis. Reservations for the tour are not accepted • Tour lasts approximately 75 min. Actual duration of the tour is dependent upon the tour ticket number assigned by the National Park Service • Tour return times are approximate and dependent on daily visitation counts at the USS Arizona Memorial • Security restrictions and regulations at the USS Arizona Visitor Center and on the USS Arizona Memorial strictly prohibit personal items that are larger than 12' x 12' x 12'. Personal items are defined as - but are not limited to - baby strollers, backpacks, fanny packs, women's purses, shopping bags, diaper bags, large camera bags • Personal storage lockers are available for rental at the Visitor Center for a fee • Participants should be ambulatory & comfortably able to ascend / descend stairs

History Revisited

Arizona Memorial • USS Missouri • National Memorial Cemetery of the Pacific • Honolulu City Tour



World history was forever changed during the early morning hours of December 7, 1941 with the attack on Pearl Harbor. Today the National Park Service administers this historical site. Onboard the USS Missouri, General Douglas MacArthur accepted Japan's unconditional surrender, bringing World War II to an end. Walk the decks of history. Armaments like massive 16-inch naval guns and Tomahawk missile launchers are explained in detail.

\$64.00 per adult
\$41.50 per child (ages 3 - 11)

6:30 am Depart Hotel(s)
 2:30 pm Return to Hotel(s)



Pūowaina – literally meaning the “hill of sacrifice” – is home to the National Memorial Cemetery of the Pacific. Punchbowl is a lasting tribute to men and women who have proudly served their country in military service.

From there we venture into and through historic Honolulu: 'Iolani Palace, the only royal palace in America, the King Kamehameha Statue, Kawaiaha'o Church and the Mission Houses Museum.

PRICE INCLUDES:

- Air-conditioned transportation
- Narrated Tour by State of Hawai'i Certified Driver Tour Guide
- USS Arizona Memorial Tour
- USS Missouri admission & Tour
- Drive thru the Punchbowl National Cemetery of the Pacific and historic sites
- Hawai'i State tax and Island Partners Hawai'i coordination

PLEASE NOTE:

The USS Arizona Memorial Tour is managed by the U.S. National Park Service and is facilitated on a first-come-first-served basis. Reservations for the tour are not accepted • Tour lasts approximately 75 min. Actual duration of the tour is dependent upon the tour ticket number assigned by the National Park Service • Tour return times are approximate and dependent on daily visitation counts at the USS Arizona Memorial • Security restrictions and regulations at the USS Arizona Visitor Center and on the USS Arizona Memorial strictly prohibit personal items that are larger than 12' x 12' x 12'. Personal items are defined as - but are not limited to - baby strollers, backpacks, fanny packs, women's purses, shopping bags, diaper bags, large camera bags • Personal storage lockers are available for rental at the Visitor Center for a fee • Participants should be ambulatory & comfortably able to ascend / descend stairs

Homes of Hawaiian Royalty Tour



'Iolani Palace is the only royal palace in the United States of America. During its time, the palace hosted many elaborate dinners and royal celebrations in the latest style and fashion of the era. Today, portraits, furnishings, and monarchy era regalia are on display.

\$146.60 per adult

9:00 am Depart Hotel(s)
4:30 pm Return to Hotel(s)

Hāanaiakamalama (meaning “foster child of the moon”) is the given name for the historic Queen Emma Summer Palace in lovely Nu‘uanu Valley. King Kamehameha IV, the queen consort and their young son, Prince Albert Edward, enjoyed some of their happiest times together here, as a retreat from the rigors of court life in hot and dusty Honolulu of the 1850’s.

The Willows Restaurant, opened in 1944, is nestled quietly within the heart of Honolulu and sits upon one acre of lush tropical gardens, native Hawaiian flowers, and cascading waterfalls. Enjoy open air dining in this gathering place of Aloha, It pays tribute to culturally rich and ethnically diverse lineage and tradition-filled lifestyle of the gentler, beautiful times of yesteryear.

PRICE INCLUDES:

- Exclusive chartered air-conditioned mini coach transportation
- Narrated Tour by State of Hawai‘i Certified Driver Tour Guide
- Admission and docent guided tour of ‘Iolani Palace and Queen Emma Summer Palace and a visit to Kamehameha Statue
- Driving tour through Historic Honolulu – Kawaiaha‘o Church, Honolulu Hale (City Hall) & Chinatown
- Lunch at The Willows Restaurant
- Gratuities, Hawai‘i State tax and Island Partners Hawai‘i coordination

PLEASE NOTE:

Maximum of 20 people per ‘Iolani Palace guided tour • Children under 5 years of age are not allowed in ‘Iolani Palace

Whale Watch Cruise • Star of Honolulu



Each year between December and April, humpback whales return to their Hawaiian winter home. It is in the warm, sheltered waters of O‘ahu’s southern shoreline that na koholā or humpback whales are observed, applauded, and glorified. These playful giants are frequently seen breaching, spy-hopping, and fluking, all common marine mammal behaviors.

\$54.00 per adult

\$37.00 per child (ages 3 - 11)

Buffet Lunch Pricing

\$70.00 per adult

\$46.50 per child (ages 3 - 11)

10:35 am Depart Hotel(s)
3:00 pm Return to Hotel(s)

The Star of Honolulu is a custom-built 232-foot long touring vessel that will be your observation platform for this amazing experience. The four spacious decks, 60’ observation sun deck, and two elevators make getting a seaside-viewing seat easy. A tasty buffet lunch option is also available.

The professionally trained crew strictly will share through an informative narration the natural history of the humpback, their behavior patterns, and the conscious preservation efforts being made on behalf of this remarkable species.

PRICE INCLUDES:

- Roundtrip air-conditioned transportation between hotel(s) and Honolulu Harbor / Aloha Tower marketplace Pier 8
- 2.5 hour Whale Watch Cruise on the Star of Honolulu
- Professional crew and onboard Marine Mammal Naturalist
- Hawaiian Cultural activities – lei making, ‘ukulele and hula lessons
- Hawai‘i State tax, 3% Harbor fee and Island Partners Hawai‘i coordination

PLEASE NOTE:

Wear comfortable clothing and use sunblock • Beverages - Mai tai’s, beer, wine - are available for purchase onboard • Snacks are available to purchase on board in lieu of lunch buffet • Participants should be in good physical condition with no significant health problems or concerns

BUFFET LUNCH OPTION INCLUDES:

- All of the above plus buffet lunch consisting of Carved Roast Beef, Hulihuli Chicken, Lomilomi Salmon, various salads and desserts.

Mountains to the Sea • Little Circle Island Tour



The perfect morning or afternoon jaunt waits as you discover and enjoy the diversity of Honolulu, from the mountains to the sea. The tour begins at lē‘ahi or Diamond Head, one of Hawai‘i’s most recognizable landmarks. Nu‘uanu Valley is a lush and serene botanical wonder, where at the valley’s end is the famed Nu‘uanu Pali, where ancient warriors once battled and modern visitors delight in the breathtaking vista for the windward side. The Hālonā Blowhole is a photographers delight, spewing forth a geyser of ocean spray. Hanauma Bay marine preserve provides aquatic thrill-seekers with incomparable snorkeling. Newfound friends, fantastic scenery, and a knowledgeable guide are the essential ingredients for a great afternoon of sightseeing.

\$32.93 per adult
\$29.69 per child (ages 1 - 11)

2:00 pm Depart Hotel(s)
 5:30 pm Return to Hotel(s)

PRICE INCLUDES:

- Air conditioned transportation
- Narrated Tour by State of Hawai‘i Certified Driver Tour Guide
- Visit to the exterior lookout of Diamond Head Crater
- Drive through Nu‘uanu Valley Rainforest
- Visit to Nu‘uanu Pali Lookout, Sandy Beach, Makapu‘u, Hālonā Blowhole, Hanauma Bay Lookout and Koko Head Crater
- Hawai‘i State tax
- Island Partners Hawai‘i coordination

PLEASE NOTE:

Hanauma Bay is closed on Tuesday

O‘ahu Circle Island Tour



The tour begins at lē‘ahi or Diamond Head, easily one of Hawai‘i’s most recognizable landmarks. Hanauma Bay marine preserve provides aquatic thrill-seekers with incomparable snorkeling and diving, not to mention a striking view.

The Byodo-In Temple is set against the majestic Ko‘olau Mountains. Take time to meditate and enjoy the manicured temple grounds, gardens and koi (ornamental carp) pond. A scenic narrative drive through the lush tropical beauty of the Windward coastline brings you to Kualoa Ranch for the Legends and Legacy Tour.

The North Shore - Sunset Beach, Banzai Pipeline, Waimea Bay, Hale‘iwa... all are legendary surf breaks. During the winter months thunderous surf greets surfers from around the globe. The central plain of O‘ahu is home to thousands of acres of hala kahiki – pineapple. At the Dole Plantation you’ll be amazed at the different varieties of “the king of all fruits”.

\$78.53 per adult
\$47.12 per child (ages 3 - 11)

8:15 am Depart Hotel(s)
 5:45 pm Return to Hotel(s)

PRICE INCLUDES:

- Air-conditioned transportation
- 120-mile Narrated Tour around O‘ahu
- Visit to the Amelia Earhart Diamond Head Lookout, Hanauma Bay overview, Hālonā Blowhole, Sandy Beach, Makapu‘u Point Lookout, Nu‘uanu Pali Lookout, Byodo-In Temple and Gardens, North Shore surfing beaches, Dole Pineapple Plantation
- Drive through the Wai‘ālae-Kāhala residential area & Windward coastline
- No Host lunch at a Windward restaurant
- Kualoa Ranch Legends and Legacy Tram Tour
- Hawai‘i State tax and Island Partners Hawai‘i coordination

PLEASE NOTE:

Hanauma Bay is closed on Tuesday

O'AHU FARM TOURS



**All Farm Tours
Available
Saturday 1/7/2012
Tuesday 1/10/2012**

O'ahu is also home to a surprising diversity of farm and agricultural operations. Seed corn, herbs, tropical flowers, pineapples, livestock, coffee, chocolate, tropical fruits and vegetables, aquaculture, organics ... the list goes on and on.

The AFBF 2012 O'ahu Farm Tour program showcases the best of O'ahu agriculture. It's an opportunity to visit, meet and interact with our island farming community – your Hawaiian agricultural peers – as they share and explain their unique methods, operations and purpose. Some tours include an amazing lunch featuring an acclaimed island chef, restaurant or eatery that promotes “Farm to Table”.

The O'ahu Farm Tours featured on the following pages are offered in two distinct styles:

Half Day, "Farm Tours Only" (See # 1 - # 4)

- Exclusive excursions to visit two unique island farms
- Behind the scenes insights into their operation and business model
- Learn about Hawai'i's unique tropical crops and year round growing cycles
- 4.5 hour time frames easily fit into any schedule

Full Day, "Farms, Island Highlights, Culinary Connection" Tours (See # 5 - #15)

- Exclusive excursions to visit two or three specific island farms
- Behind the scenes insights into their operation and business model
- Learn about Hawai'i's unique tropical crops and year round growing cycles
- Spectacular Island highlights included
- Culinary connections--delectable lunch at an acclaimed Hawai'i Regional Cuisine Chef's restaurant or famous "local" eatery.

Important Notes for all AFBF 2012 Farm Tours:

- Reserve Early as these Farm Tours have limited availability and inventory.
- Offered exclusively to AFBF 2012 participants on a non-hosted basis but require a minimum # of participants.
- At all stops you will meet representatives, hands-on in the day-to-day operation, who will share exclusive behind-the-scenes access and insights.
- “Local” guide with extensive agricultural history knowledge
- All rates inclusive of Hawai'i State Tax, Fees and Gratuities.
- Farm Tour components and timing subject to change.
- Availability and pricing confirmed at time of booking
- Cancellation penalties will apply for no-shows



O'AHU HALF DAY FARM TOURS

O'ahu Half Day Farm Tour #1 - Dole Plantation & Monsanto Headquarters



The central plain of O'ahu is the home to thousands of acres of agricultural royalty - hala kahiki or pineapple – “the king of all fruits.” At the Dole Plantation you'll be amazed at the different varieties and products, and educated on the operations process as you visit behind-the-scenes. Originally operated as a fruit stand beginning in 1950, Dole Plantation is one of the most popular attractions on O'ahu.

“Monsanto of today is focused on agriculture and supporting farmers around the world in their mission to produce more while conserving more.” Hawai'i has proven to be an ideal location for Monsanto's agricultural operations. Learn how our island environment and climate contribute to the success of Monsanto's global operations, vision and commitment.

Morning Tour

7:00am Depart Hotel(s)
8:00am Dole Plantation
9:15am Monsanto Headquarters
11:30am Return to Hotel(s)

\$95.00 per adult Minimum 45 people

PRICE INCLUDES:

- Air-conditioned transportation
- “Local” guide with extensive agricultural history knowledge
- Visit to Dole Plantation and Monsanto Headquarters
- All rates inclusive of Hawai'i State Tax, Fees and Gratuities

PLEASE NOTE:

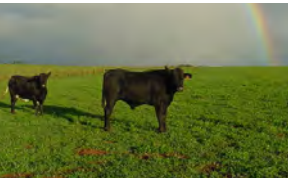
- Wear comfortable clothing and walking shoes

Afternoon Tour

12:00pm Depart Hotel(s)
1:00pm Dole Plantation
2:15pm Monsanto Headquarters
4:30pm Return to Hotel(s)



O'ahu Half Day Farm Tour #2 - North Shore Cattle Company & Monsanto North Shore



Located away from the hustle and bustle of Honolulu, North Shore Cattle Company is the largest commercial (1,100 acres) pasture-finishing cattle ranch on O'ahu. Their beef is “100% Grass-fed and Pasture-raised. No antibiotics and hormones are used; the cattle are all Hawai'i born and raised.” The mission of the ranch is to produce “Beef with that Old Fashioned Taste”.

“Monsanto of today is focused on agriculture and supporting farmers around the world in their mission to produce more while conserving more.” Hawai'i has proven to be an ideal location for Monsanto's agricultural operations. Learn how our island environment and climate contribute to the success of Monsanto's global operations, vision and commitment.

Morning Tour

7:00am Depart Hotel(s)
8:15am North Shore Cattle Company
9:45am Monsanto Facilities
11:45am Return to Hotel(s)

\$95.00 per adult Minimum 45 people

PRICE INCLUDES:

- Air-conditioned transportation
- “Local” guide with extensive agricultural history knowledge
- Visit to North Shore Cattle Company and North Shore Monsanto Facility
- All rates inclusive of Hawai'i State Tax, Fees and Gratuities

PLEASE NOTE:

- Wear comfortable clothing and walking shoes

Afternoon Tour

12:00pm Depart Hotel(s)
1:15pm North Shore Cattle Company
2:45pm Monsanto Facilities
4:45pm Return to Hotel(s)

O'ahu Half Day Farm Tour #3 - Waialua Coffee & Chocolate



Hear and see the success of diversified agriculture that has evolved on the North Shore of O'ahu since the closure of Waialua Sugar in the mid-1990's.

Waialua Estate Coffee and Cacao are grown on former sugarcane lands on the Wahiawā Plateau overlooking O'ahu's famous North Shore. They are one of the most successful diversified agriculture operations on O'ahu. The 155-acre coffee farm sits above the coastal towns of Hale'iwa and Waialua, while the 20-acre cacao orchard is situated at sea level along the banks of the Kaula River, near Waialua town.

Processing the two crops works in tandem with harvest seasons spread six months apart and keeps the full-time crew employed year-round. Waialua Estate Coffee and Cacao makes use of beneficial insects for its pest management program permitting the growing of pesticide-free crops that consistently produce the fine products offered under the Waialua Estate brand.

Morning Tour

7:00am Depart Hotel(s)
 8:15am Waialua Coffee Plantation Tour and Tasting
 9:30am Waialua Chocolate Plantation Tour and Tasting
 11:30am Return to Hotel(s)

\$95.00 per adult Minimum 45 people

PRICE INCLUDES:

- Air-conditioned transportation
- "Local" guide with extensive agricultural history knowledge
- Visit to Waialua Coffee and Waialua Chocolate
- All rates inclusive of Hawai'i State Tax, Fees and Gratuities

Afternoon Tour

12:00pm Depart Hotel(s)
 1:15pm Waialua Coffee Plantation Tour and Tasting
 2:30pm Waialua Chocolate Plantation Tour and Tasting
 4:30pm Return to Hotel(s)

PLEASE NOTE:

- Wear comfortable clothing and walking shoes



O'ahu Half Day Farm Tour #4 - Nalo Farms & Oceanic Institute



A decorated World War II combat veteran, Charles Okimoto, founded Nalo Farms in 1953. Nestled at the foot of the majestic Ko'olau Mountains in Waimānalo, it is a family-run operation that supplies approximately 130 restaurants with over 3,000 pounds of their fresh-cut, top-quality tasty greens each and every week. Its signature "Nalo Greens" is a unique salad mix designed by current farm owner and president Dean Okimoto. Dean has found that Waimānalo produce has very unique and zesty flavors that he can mix and match to market to Hawai'i's top chefs. He attributes the unique soils and climate of Waimānalo to giving his produce these singular attributes.

The mission of Ocean Institute Aquaculture is to develop and transfer economically responsible technologies to increase aquatic food production while promoting the sustainable use of ocean resources.

Morning Tour

7:00am Depart Hotel(s)
 8:00am Nalo Farms Field Tour
 9:30am Oceanic Institute Aquaculture Tour
 11:30am Return to Hotel(s)

\$95.00 per adult Minimum 45 people

PRICE INCLUDES:

- Air-conditioned transportation
- "Local" guide with extensive agricultural history knowledge
- Visit to Nalo Farms and Oceanic Institute Aquaculture
- All rates inclusive of Hawai'i State Tax, Fees and Gratuities

Afternoon Tour

12:00pm Depart Hotel(s)
 1:00pm Nalo Farms Field Tour
 2:30pm Oceanic Institute Aquaculture Tour
 4:30pm Return to Hotel(s)

PLEASE NOTE:

- Wear comfortable clothing and walking shoes

O'AHU FULL DAY FARM TOURS

O'ahu Farm Tour #5 - Dole Plantation, Monsanto & Sugarland Farms



The central plain of O'ahu is the home to thousands of acres of agricultural royalty - hala kahiki or pineapple – “the king of all fruits.” At the Dole Plantation you'll be amazed at the different varieties and products, and educated on the operations process as you visit behind-the-scenes. Originally operated as a fruit stand beginning in 1950, Dole Plantation is one of the most popular attractions on O'ahu. Meet with Dole Management for an exclusive behind-the-scenes view.

“Monsanto of today is focused on agriculture and supporting farmers around the world in their mission to produce more while conserving more.” Hawai'i has proven to be an ideal location for Monsanto's agricultural operations. Learn how our island environment and climate contribute to the success of Monsanto's global operations, vision and commitment.

Sugarland Farms is one of O'ahu's largest suppliers of fresh produce, about 1 million pounds per week, or almost a pound per local resident. They sell to the mass market, including local supermarkets, and have several thousand acres in diversified agriculture.

Then, an incredible gourmet lunch at Roy's Ko'Oolina. Chef Roy has been a leader and founder of Hawai'i's Regional Cuisine. Reserve your seat at his table for a delectable “Farm to Fork” Experience.

\$153.00 per adult

Minimum 45 people

8:00am Depart Hotel(s)
8:45am Dole Plantation
10:00am Monsanto Headquarters
11:30am Sugarland Farms
1:00pm Lunch at Roy's Ko'Oolina
3:00pm Return to Hotel(s)

PRICE INCLUDES:

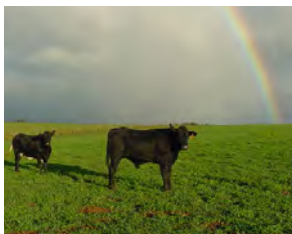
- Air-conditioned transportation
- “Local” guide with extensive agricultural history knowledge
- Visit to Dole Plantation, Monsanto Headquarters and Sugarland Farms
- Group lunch at Roy's Ko' Olina
- All rates inclusive of Hawai'i State Tax, Fees and Gratuities

PLEASE NOTE:

- Wear comfortable clothing and walking shoes



O'ahu Farm Tour #6 - North Shore Cattle Company & Monsanto



Located away from the hustle and bustle of Honolulu, North Shore Cattle Company is the largest commercial (1,100 acres) pasture-finishing cattle ranch on O'ahu. Their beef is “100% Grass-fed and Pasture-raised. No antibiotics and hormones are used; the cattle are all Hawai'i born and raised.” The mission of the ranch is to produce “Beef with that Old Fashioned Taste”.

“Monsanto of today is focused on agriculture and supporting farmers around the world in their mission to produce more while conserving more.” Hawai'i has proven to be an ideal location for Monsanto's agricultural operations. Learn how our island environment and climate contribute to the success of Monsanto's global operations, vision and commitment.

Hale'iwa, Waimea Bay, Banzai Pipeline, Sunset Beach – “A-list” of legendary surfing beaches - the North Shore of O'ahu lays claim to the best surf in the world. During the winter months, thunderous surf greets surfers from around the globe as they come to test their skill; they ride mountains. On the North Shore surfing is more than a sport; it's a way of life.

“...The best dining on the entire North Shore is back up the road in Hale'iwa Town, a place called Jameson's where hurricane lamps and fresh flowers grace tables with crisp white linens, while fans spin in the ceiling.”

-- LA Times by Jerry Hulse, Times Travel Editor

\$138.00 per adult

Minimum 45 people

8:00am Depart Hotel(s)
9:00am North Shore Monsanto Facility
10:30am North Shore Cattle Company
11:30am Visit North Shore Surfing Beach(es)
12:30pm Lunch at Jameson's
3:00 pm Return to Hotel(s)

PRICE INCLUDES:

- Air-conditioned transportation
- “Local” guide with extensive agricultural history knowledge
- Visit to North Shore Cattle Company, North Shore Monsanto Facility and North Shore Surfing Beach(es)
- Group lunch at Jameson's
- All rates inclusive of Hawai'i State Tax, Fees and Gratuities.

PLEASE NOTE:

- Wear comfortable clothing and walking shoes

O'ahu Farm Tour #7 - Syngenta Hawaii, North Shore & Kahuku



“Syngenta Hawaii LLC, part of a \$9.2 billion global agricultural firm, has purchased 848 acres of land in Kunia to expand its corn and soybean research operations in the islands. Meet operations specialist and tour the facility.

Experience a drive-thru tour of O'ahu's North Shore surfing beaches. Hale'iwa, Waimea Bay, Banzai Pipeline, Sunset Beach – “A-list” of legendary surfing beaches - the North Shore of O'ahu lays claim to the best surf in the world.

Ho Farms – six different tomato varieties, cucumbers, squash, long beans, eggplant and papaya – is truly a family business. Located in Kahuku on O'ahu's North Shore, each member of the Ho family is intimately involved in all aspects of the business. They provide the highest quality and freshest produce to Hawai'i's residents.

Kahuku Farms is a result of two farming families spanning back three generations in Hawai'i. Descendants of the Matsuda/Fukuyama families migrated to Hawai'i from Japan to work in the sugar plantations back in the 1900's. Today, you learn about the growth of this family's operations and true farming collaboration that continues to build a legacy for future generations.

Enjoy an “On the Farm Lunch” right here at Kahuku.

\$138.00 per adult

Minimum 45 people

8:00am Depart Hotel(s)
 9:00am Syngenta Hawai'i Headquarters
 11:00am Ho Farms in Kahuku
 View North Shore Surfing Beaches en-route
 12:00pm Kahuku Farms
 1:00 pm Lunch “on-the-farm” Kahuku Farms
 3:00 pm Return to Hotel(s)

PRICE INCLUDES:

- Air-conditioned transportation
- “Local” guide with extensive agricultural history knowledge
- Visit to Syngenta Hawai'i Headquarters, Ho Farms and Kahuku Farms
- Drive thru tour of North Shore surfing beaches
- Lunch at Kahuku Farms
- All rates inclusive of Hawai'i State Tax, Fees and Gratuities

PLEASE NOTE:

- Wear comfortable clothing and walking shoes

O'ahu Farm Tour #8 - Wailua Coffee & Chocolate and Twin Bridge Farms



Hear and see the success of diversified agriculture that has evolved on the North Shore of O'ahu since the closure of Wailua Sugar in the mid-1990's.

Wailua Estate Coffee and Cacao are grown on former sugarcane lands on the Wahiawā Plateau overlooking O'ahu's famous North Shore. They are one of the most successful diversified agriculture operations on O'ahu. The 155-acre coffee farm sits above the coastal towns of Hale'iwa and Wailua, while the 20-acre cacao orchard is situated at sea level along the banks of the Kaukonahua river, near Wailua town.

Processing the two crops works in tandem with harvest seasons spread six months apart and keeps the full-time crew employed year-round. Wailua Estate Coffee and Cacao makes use of beneficial insects for its pest management program permitting the growing of pesticide-free crops that consistently produce the fine products offered under the Wailua Estate brand.

Enjoy a field visit to Twin Bridge Farms, a 250-acre operation in Wailua that produces fresh asparagus all year round. The company pays close attention to post harvest handling and ensures that its products arrive in the marketplace as quickly as possible. As a specialty crop, it is in high demand by local restaurants, gourmet shops and island residents.

INDIGO restaurant and acclaimed chef Glenn Chu offer a signature blend of modern Asian, French and Mediterranean cuisine, creating a balance and harmony that delights any palate with an award winning menu, and unparalleled hospitality and service. Located on the edge of modern day Honolulu and Historic Chinatown, in the heart of the culture and arts district.

\$153.00 per adult

Minimum 45 people

8:00am Depart Hotel(s)
 9:00am Wailua Coffee Plantation Tour and Tasting
 10:00am Wailua Chocolate Plantation Tour and Tasting
 11:15am Twin Bridge Farms
 1:00 pm Lunch at Indigo Restaurant
 3:00 pm Return to Hotel(s)

PRICE INCLUDES:

- Air-conditioned transportation
- “Local” guide with extensive agricultural history knowledge
- Visit to Wailua Coffee, Wailua Chocolate and Twin Bridge Farms
- Group lunch at Indigo Restaurant with Chef Glenn Chu
- All rates inclusive of Hawai'i State Tax, Fees and Gratuities

PLEASE NOTE:

- Wear comfortable clothing and walking shoes

O‘ahu Farm Tour #9 - Pali, Nalo Farms & Oceanic Institute



Nu‘uanu Valley is a lush and serene botanical wonder just minutes from Honolulu, where an island rainforest may be experienced up close. At the valley’s end is the famed Nu‘uanu Pali, where ancient warriors once battled and modern visitors delight in the breathtaking vista of the windward side.

A decorated World War II combat veteran, Charles Okimoto, founded Nalo Farms in 1953. Nestled at the foot of the majestic Ko‘olau Mountains in Waimānalo, it is a family-run operation that supplies approximately 130 restaurants with over 3,000 pounds of their fresh-cut, top-quality tasty greens each and every week. Its signature “Nalo Greens” is a unique salad mix designed by current farm owner and president Dean Okimoto. Dean has found that Waimānalo produce has very unique and zestier flavors that he can mix and match to market to Hawai‘i’s top chefs. He attributes the unique soils and climate of Waimānalo to giving his produce these singular attributes.

The mission of Ocean Institute Aquaculture is to develop and transfer economically responsible technologies to increase aquatic food production while promoting the sustainable use of ocean resources.

Chef Roy Yamaguchi is one of the leaders in Hawai‘i Regional Cuisine incorporating fresh locally grown ingredients and supporting Hawai‘i’s farmers. Nowhere else will you find a culinary experience quite like the flavors, textures and colors found in Roy’s Hawaiian Fusion Cuisine. Combining the freshest local ingredients with European sauces and bold Asian spices, each creation leaves you with the feeling that you’ve just found paradise.

\$138.00 per adult

Minimum 45 people

8:00am	Depart Hotel(s)
8:45am	Nu‘uanu Pali Lookout
9:30am	Nalo Farms Field Tour
11:00am	Oceanic Institute Aquaculture Tour
12:45pm	Lunch at Roy’s
2:30pm	Return to Hotel(s)

PRICE INCLUDES:

- Air-conditioned transportation
- “Local” guide with extensive agricultural history knowledge
- Visit to Nu‘uanu Pali Lookout, Nalo Farms and Oceanic Institute Aquaculture
- Group lunch at Roy’s
- All rates inclusive of Hawai‘i State Tax, Fees and Gratuities

PLEASE NOTE:

- Wear comfortable clothing and walking shoes

O‘ahu Farm Tour #10 - Native Hawaiian Plants



Nu‘uanu Valley is a lush and serene botanical wonder just minutes from Honolulu, where an island rainforest may be experienced up close. At the valley’s end is the famed Nu‘uanu Pali, where ancient warriors once battled and modern visitors delight in the breathtaking vista.

Hui Kū Maoli Ola is an organization dedicated to the perpetuation and preservation of Hawai‘i’s natural history and culture. By integrating education, and the propagation of native Hawaiian plants – the majority of which are not commonly found elsewhere in the world - they are increasing public appreciation for the unique qualities native plants can bring.

Years of hard work and persistence have developed a fast-growing market for native plants. Partnerships with high profile retail outlets such as The Home Depot and Wal-Mart have helped to develop this important market.

A visit to a macadamia nut farm rounds out the day’s adventure. Tropical Farms began as a road-side operation in 1987, with Kamehameha Highway in the fore, and the Pacific Ocean at their backs.

Lunch will be at Alan Wong’s where creativity, passion and good food remain at the heart of what they do. Having naturally evolved into a place of learning, appreciation and service to the community. Alan Wong is investing in Hawaii — its land, its culture, its people, its future. There is truly an aloha spirit here in the islands and we hope to perpetuate that in all we do.

\$138.00 per adult

Minimum 45 people

8:00am	Depart Hotel(s)
9:00am	Nu‘uanu Pali Lookout
9:30am	Hui Kū Maoli Ola w/Hawaiian Plant Specialist
11:30am	Visit Macadamia Nut Tropical Farm
1:15 pm	Lunch at The Pineapple Room by Alan Wong
3:00pm	Return to Hotel(s)

PRICE INCLUDES:

- Air-conditioned transportation
- “Local” guide with extensive agricultural history knowledge
- Visit to Hui Kū Maoli Ola with Hawaiian Plant Specialist
- Visit to Macadamia Nut Farm
- Group lunch at The Pineapple Room by Alan Wong
- All rates inclusive of Hawai‘i State Tax, Fees and Gratuities

PLEASE NOTE:

- Wear comfortable clothing and walking shoes

O‘ahu Farm Tour #11 - Sumida Watercress, Aloun Farms & Monsanto



In the midst of an urban sprawl, you will find a green oasis called the Sumida Watercress Farm, the largest watercress farm in Hawai‘i and responsible for 75% of all watercress produced in the State. The 11-acre farm began in 1928. The founders chose watercress as their main crop due to favorable growing conditions and availability of fresh spring water. Sumida Farm watercress is known for long, thick stalks and a peppery crisp flavor profile.

The goal at Aloun Farms is to provide Hawai‘i consumers with “the highest quality of fresh island grown produce”. The 3,000-acre operation provides full-time employment to 180 people, and is a strong supporter of community outreach through collaboration with the Future Farmers of America, school-to-work programs, educational farm visits, and practical training for FFA high school students.

“Monsanto of today is focused on agriculture and supporting farmers around the world in their mission to produce more while conserving more.” Hawai‘i has proven to be an ideal location for Monsanto’s agricultural operations. Learn how our island environment and climate contribute to the success of Monsanto’s global operations and commitment.

Chef Roy Yamaguchi is one of the leaders in Hawai‘i Regional Cuisine incorporating fresh locally grown ingredients and supporting Hawai‘i’s farmers. Nowhere else will you find a culinary experience quite like the flavors, textures and colors found in Roy’s Hawaiian Fusion Cuisine. Combining the freshest local ingredients with European sauces and bold Asian spices, each creation leaves you with the feeling that you’ve just found paradise.

\$153.00 per adult

Minimum 45 people

8:00am Depart Hotel(s)
 9:00am Sumida Watercress Farm
 10:30am Aloun Farms
 12:00pm Monsanto Headquarters
 1:30pm Lunch at Roy’s Ko’ Olina
 3:30pm Return to Hotel(s)

PRICE INCLUDES:

- Air-conditioned transportation
- “Local” guide with extensive agricultural history knowledge
- Visit to Sumida Watercress, Aloun Farms and Monsanto Headquarters
- Group lunch at Roy’s Ko’ Olina
- All rates inclusive of Hawai‘i State Tax, Fees and Gratuities

PLEASE NOTE:

- Wear comfortable clothing and walking shoes



O‘ahu Farm Tour #12 - Pioneer Hi-Bred, Big Wave Tomato & Twin Bridge Farm



Pioneer Hi-Bred International, Inc., is the world’s leading supplier of agricultural genetics and is the leading developer and integrator of agricultural technology. Pioneer develops, produces and markets a full line of seeds, forage and grain additives and services to grain and livestock producers, grain processors and other customers worldwide. They were attracted to build an O‘ahu facility because of a group of established agricultural producers on the island, and contract up to 1,000 acres of corn each year through these local growers. The operation adds more than \$5 million annually to the local economy.

Waialua, on O‘ahu’s North Shore has been a traditional agriculture area for centuries, blessed with nutrient rich fertile volcanic soil and abundant rainfall. Big Wave Tomato provides a healthy and delicious product, directly from their tomato vineyard to Honolulu’s award winning restaurants, upscale health food stores and premier, “all Hawai‘i grown and produced” Farmers Markets.

Enjoy a field visit to Twin Bridge Farms, a 250-acre operation in Waialua that produces fresh asparagus all year round. The company pays close attention to post harvest handling and ensures that its products arrive in the marketplace as quickly as possible. As a specialty crop, it is in high demand by local restaurants, gourmet shops and island residents.

Lunch is at Jameson’s By the Sea ... “famous for its fresh Island fish and ocean views.” -- Spirit of Aloha Magazine

\$153.00 per adult

Minimum 45 people

8:00am Depart Hotel(s)
 9:00am Pioneer Hi-Bred Operations
 10:00am Big Wave Tomato Farm
 11:15am Twin Bridge Farms
 12:30pm Lunch at Jameson’s By The Sea
 3:00pm Return to Hotel(s)

PRICE INCLUDES:

- Air-conditioned transportation
- “Local” guide with extensive agricultural history knowledge
- Visit to Pioneer Hi-Bred Operations, Big Wave Tomato Farm and Twin Bridge Farms
- Group lunch at Jameson’s
- All rates inclusive of Hawai‘i State Tax, Fees and Gratuities

PLEASE NOTE:

- Wear comfortable clothing and walking shoes

O'ahu Farm Tour #13 - Whole Foods, Nalo & Olomana Farms



The history and reputation of Whole Foods Market is intimately linked to their support of local farmers. For more than 25 years, they have worked to provide the broadest possible selection of the highest quality produce available. They are permanently committed to buying from local producers whose fruits and vegetables meet their high quality standards.

A decorated World War II combat veteran, Charles Okimoto, founded Nalo Farms in 1953. Today this family-run operation supplies approximately 130 restaurants with over 3,000 pounds of their fresh-cut top-quality tasty greens weekly. Its signature “Nalo Greens” is a unique salad mix designed by current farm owner and president Dean Okimoto. He took an approach similar to those of California wine growers - grapes vary in flavor from site to site, so do vegetables. Dean has found that Waimānalo produce has very unique and zestier flavors that he can mix and match to market to Hawai'i's top chefs.

Olomana Farms is a production and demonstration, organic market garden including organic, bio-intensively-produced vegetables, and selected fruits, herbs and ornamental plants; exotic chickens, geese, turkeys, ducks, and naturally raised eggs (no antibiotics, no hormones).

Chef Roy Yamaguchi is one of the leaders in Hawai'i Regional Cuisine incorporating fresh locally grown ingredients and supporting Hawai'i's farmers. Nowhere else will you find a culinary experience quite like the flavors, textures and colors found in Roy's Hawaiian Fusion Cuisine. Combining the freshest local ingredients with European sauces and bold Asian spices, each creation leaves you with the feeling that you've just found paradise.

\$153.00 per adult

Minimum 45 people

8:00am Depart Hotel(s)
 8:30am Whole Foods Market Tour
 10:00am Nalo Farms
 11:30am Olomana Farms
 1:00pm Lunch at Roy's Waikiki
 3:00 pm Return to Hotel(s)

PRICE INCLUDES:

- Air-conditioned transportation
- “Local” guide with extensive agricultural history knowledge
- Visit to Whole Foods Market, Nalo Farms and Olomana Farms
- Group lunch at Roy's Waikiki
- All rates inclusive of Hawai'i State Tax, Fees and Gratuities

PLEASE NOTE:

- Wear comfortable clothing and walking shoes

O'ahu Farm Tour #14 - Kualoa Ranch & Waialua Chocolate



A day spent enjoying and experiencing the not often seen side of O'ahu called Kualoa. Explore this ancient ahupua'a (mountain to the sea land division) where arriving voyaging canoes were met with ceremony and honor. Today Kualoa is a place where the paniolo heritage of Hawai'i, the cowboy legacy of our past is remembered with pride and distinction. Guests enjoy a visit to the working cattle ranch of Kualoa to meet the ranchers, followed by a drive through tour of the North Shore of O'ahu.

At the Waialua Chocolate Plantation, experience chocolate sourced from some of the finest cacao estates in the world. The 20-acre cacao orchard is situated at sea level along the banks of the Kaukonahua river, near Waialua town on O'ahu's famous North Shore. Waialua Chocolate Plantation's cacao trees are a special blend of Criollo, Trinatrio and Forestero varieties. Its pest management program makes use of beneficial insects, permitting the growing of a pesticide-free crop that consistently produces an outstanding high quality product.

After your plantation tour, we'll enjoy lunch at a local favorite, Hale'iwa Joe's, where the laid-back style of North Shore living meets great food.

\$138.00 per adult

Minimum 45 people

8:00am Depart Hotel(s)
 9:15am Kualoa Ranch Farm Operations
 10:30am Tour the North Shore of O'ahu
 11:30am Waialua Chocolate Plantation Field Tour
 1:00pm Lunch at Hale'iwa Joe's
 3:00pm Return to Hotel(s)

PRICE INCLUDES:

- Air-conditioned transportation
- “Local” guide with extensive agricultural history knowledge
- Visit to Kualoa Ranch, O'ahu's North Shore and Waialua Chocolate Plantation
- Group lunch at Hale'iwa Joe's
- All rates inclusive of Hawai'i State Tax, Fees and Gratuities

PLEASE NOTE:

- Wear comfortable clothing and walking shoes

O‘ahu Farm Tour #15 - Hawai‘i Farm Bureau Farmers' Market & Nalo Farms



The Saturday Farmers' Market is co-sponsored by the Hawai‘i Farm Bureau Federation and the Culinary Institute of the Pacific at Kapi‘olani Community College. This is Honolulu's premiere Farmers' Market, the only one featuring all Hawai‘i grown and produced foods, as well as top quality food items that are not readily available in other retail markets. Many of our vendors only supply restaurants. You'll find a variety of products including fruits, vegetables, flowers, beef, aqua cultured seafood, fresh baked breads, hand made pastas, tropical jams and jellies, unique snack foods, honey, baked goods, specialty seasonings and more. The farmers and food producers are in attendance to tell you about their products, how they grow them and how you should prepare them.

A decorated World War II combat veteran, Charles Okimoto, founded Nalo Farms in 1953. Today this family-run operation supplies approximately 130 restaurants with over 3,000 pounds of their fresh-cut top-quality tasty greens weekly. Its signature “Nalo Greens” is a unique salad mix designed by current farm owner and president Dean Okimoto. He took an approach similar to those of California wine growers - grapes vary in flavor from site to site, so do vegetables. Dean has found that Waimānalo produce has very unique and zestier flavors that he can mix and match to market to Hawai‘i's top chefs.

Chef Roy Yamaguchi is one of the leaders in Hawai‘i Regional Cuisine incorporating fresh locally grown ingredients and supporting Hawai‘i's farmers. Nowhere else will you find a culinary experience quite like the flavors, textures and colors found in Roy's Hawaiian Fusion Cuisine. Combining the freshest local ingredients with European sauces and bold Asian spices, each creation leaves you with the feeling that you've just found paradise.

\$138.00 per adult

Minimum 45 people

8:00am Depart Hotel(s)
 8:30am Hawai‘i Farm Bureau Farmers' Market
 10:30am Depart for Nalo Farms via Sandy Beach
 11:15am Arrive Nalo Farms in Waimānalo
 12:30pm Lunch at Roy's Waikīkī
 2:30 pm Return to Hotel(s)

PRICE INCLUDES:

- Air-conditioned transportation
- “Local” guide with extensive agricultural history knowledge
- Visit to Hawai‘i Farm Bureau Farmers' Market, view Sandy Beach and visit Nalo Farms
- Group lunch at Roy's Waikīkī
- All rates inclusive of Hawai‘i State Tax, Fees and Gratuities

PLEASE NOTE:

- Wear comfortable clothing and walking shoes





Pre & Post Island Packages

In the tradition of the ancient seafaring Polynesians, we invite you to embark on your very own **Voyage of Discovery** through the islands. Each One and Two Island Package was created specifically for you, the members of the American Farm Bureau Federation. Let us share Our Hawai'i with you, on your own personal voyage.

Your trust and investment is honored with the highest quality experience, designed by our expert local travel team. No detail has been overlooked. Included in each package are beachfront resort accommodations, coordinated flights and airfare between the islands (*see One and Two Island Package details), luggage handling, all necessary transportation, extra special farm tours that give you an insider experience not available to the public, highlights of the most memorable sites, and culinary connections that share the bounty of the land and sea. Your guides will take care of you as our "Ohana", or extended family, and ensure seamless delivery of all package components.

One Island

Four Days / Three Nights

Prices at \$1375 per person, based on double occupancy

- Signature Lei Greeting upon arrival
- Roundtrip Airport - Hotel Transfers, including luggage handling
- 3 Nights Partial Ocean View Room at a Beachfront Hotel & Resort
- Hotel Portorage (Roundtrip)
- 3 Full Breakfasts
- 2 Exclusive Tours (in air-conditioned transportation), which include Island Highlights, visits to farms/agricultural operations and Lunch with "Farm Fresh to Table" products
- Interisland Air (jet service) -
Pre Program Island Packages: Interisland Air between island of choice and the Island of Oahu
Post Program Island Packages: Interisland Air between the Island of Oahu and the island of choice
- Island Partners Hawai'i Travel Director Guide throughout your travels
- All applicable State of Hawai'i taxes and fees

Two Islands

Six Days / Five Nights

Prices at \$1995 per person, based on double occupancy

- Signature Lei Greeting upon arrival at first airport
- Roundtrip Airport - Hotel Transfers, including luggage handling
- 5 Nights (3 nights on 1st Island, 2 nights on 2nd Island) Partial Ocean View Room at a Beachfront Hotel & Resort
- Hotel Portorage (Roundtrip) on both Islands
- 5 Full Breakfasts
- 5 Exclusive Tours (in air-conditioned transportation), which include Island Highlights, visits to farms/agricultural operations and Lunch with "Farm Fresh to Table" products
- Interisland Air (jet service) -
Pre Program Island Packages: Interisland Air between 1st and 2nd Island **and** between 2nd Island and Island of O'ahu
Post Program Island Packages: Interisland Air between the Island of Oahu to the 1st island and between 1st and 2nd Island
- Island Partners Hawai'i Travel Director Guide throughout your travels
- All applicable State of Hawai'i taxes and fees

Choose Between:

Kaua'i & Hawai'i (Big Island) • Maui & Kaua'i • Hawai'i (Big Island) & Maui

Pre "AFBF Program" Island Package Dates

Two Islands: Kaua'i & Hawai'i (Big Island)
Maui & Kaua'i
Hawai'i (Big Island) & Maui

One Island: Kaua'i
Maui
Hawai'i (Big Island)

January 1 - January 6, 2012
January 1 - January 6, 2012
January 1 - January 6, 2012

January 3 - January 6, 2012
January 3 - January 6, 2012
January 3 - January 6, 2012

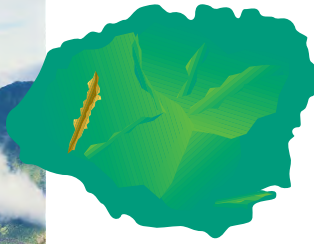
Post "AFBF Program" Island Package Dates

Two Islands: Kaua'i & Hawai'i (Big Island)
Maui & Kaua'i
Hawai'i (Big Island) & Maui

One Island: Kaua'i
Maui
Hawai'i (Big Island)

January 11 - January 16, 2012
January 11 - January 16, 2012
January 11 - January 16, 2012

January 11 - January 14, 2012
January 11 - January 14, 2012
January 11 - January 14, 2012



KAUA'I

(Mokihana Berry)

E Komo Mai, welcome to Kaua'i, the "Island of Discovery". Kaua'i is the oldest of the Islands, having matured and developed with the passage of time into a lush, exotic, and magical gem. We have created an adventure to share with you that is truly unique and special...the people, the agricultural community, and the soaring beauty of Kaua'i.

Discover 50-miles of heavenly beaches from Po'ipū Beach to Hanalei Bay. Explore charming and historic small towns like Hanapepe and Kōloa where no building is taller than a coconut tree. With so much to experience, "Hawai'i's Island of Discovery," is begging to be explored.

Kauai Marriott

Experience this wonderful resort set on 800 beachfront acres resplendent with soul-stirring views. Lounge by the amazing swimming pool or cool off under the spray of cascading waterfalls. Conde Nast Traveler applauds this stylish resort's "authentic Hawaiian style and desirable location on the golden sands of Kalapakī Beach."



Island Highlights / Farms / Culinary Connections Include:

Your journey of exploration includes two plus days of touring, featuring "essential" highlights like Waimea Canyon, dubbed the Grand Canyon of the Pacific by Mark Twain in 1866. The grandeur of the place is no less spectacular today. Although not as big or as old as its Arizona cousin, you won't encounter anything like this geological wonder anywhere else in Hawai'i. Stretching 14 miles long, one mile wide and more than 3,600 feet deep, the Waimea Canyon Lookout provides panoramic views of crested buttes, rugged crags and deep valley gorges. You'll also see the Spouting Horn blowhole, soaring 'Ōpaeka'a Falls, the royal birthing stone, and take the famous Fern Grotto river cruise. Customized and intimate farm visits will allow for peer to peer sharing of stories, insights, and bonding with your "Kaua'i cousins", your fellow farmers. We will feature some or all of the following agricultural operations: **Na 'Āina Kai Gardens**, **Hanalei Plantation**, **Kaua'i Chocolate**, and **Salt Marshes** where you will learn about the traditions and cultural significance of Hawaiian sea salt harvesting, the many uses, hues, and subtle flavor variations of this island delicacy.

Whether you select just the one island package or your visit to Kaua'i is in conjunction with another "hop", you will be ecstatic that you included Kaua'i in your itinerary!

All dining will emphasize locally grown items and a "farm-to-table" approach.



MAUI

(Lokelani)

Maui...some call it the “Magic Isle”...others simply say “Maui Nō Ka ‘Oi” or Maui is the best!

The second largest Hawaiian Island is comprised of two volcanoes, the older forms the West Maui Mountains and converges in the central plain with the still fresh, geologically speaking, flows of Mount Haleakalā. In January, you can see whales frolicking and even flirting off the coasts of all of the Hawaiian Islands, but nowhere are they more prevalent during this, the mating season for the Pacific Humpback population, than off the coast of Maui.

Wailea Beach Marriott Resort and Spa

This deluxe beachfront resort is located on the sunny leeward side of Maui within the world renowned Wailea Resort. Guests enjoy lush ocean front acres, a 10,000 sq.ft. Mandara Spa, 5 swimming pools, 54 holes of championship golf, tennis and ocean front dining. Relax in newly renovated and luxuriously appointed guestrooms.



Island Highlights / Farms / Culinary Connections Include:

Two plus days of touring will take you from the scenic slopes of fertile Upcountry Maui to iconic must-see locales such as the shopping Mecca of Lahaina Town and the mystical grandeur of ‘Īao Valley. Specialized farm experiences will provide interaction with the operation managers and will include some or all of the following: **Monsanto’s Maui Farms; Hāli‘imaile Pineapple**, producer of the world famous Maui Gold Pineapple ~samples included of course; **Surfing Goat Dairy** with it’s amazing story and award winning cheeses; and the **Maui Tropical Plantation** where you’ll go below the surface learning about their commercial banana and macadamia nut production. And, an upstart rival to the historically top rated Kona coffee grown on the Big Island, is Maui’s answer ~ delicious Kā’anapali Coffee. This venture has a business and marketing plan like none you’ve seen before, a great lesson in creative thinking for these challenging times!

Whether you select just the one island package or your visit to Maui is in conjunction with another “hop”, you will be delighted that you included Maui in your itinerary!

All dining will emphasize locally grown items and a “farm-to-table” approach.



HAWAI‘I (BIG ISLAND)

(Lehua Blossom)

Hawai‘i’s “Island of Adventure” is also nicknamed the “Big Island” because it isn’t just big, it’s still growing! On this, the youngest of the Hawaiian Islands, we have created an experience in which you’ll get to know the essence of the people and farming community, as well as the fiery volcano goddess herself!

Hilo Hawaiian Hotel

(Available in all Big Island Packages, except the Kaua‘i/Big Island Pre Program Package that begins January 1)

This hotel on Hilo Bay is the perfect headquarters from which to explore the Hawai‘i Volcanoes National Park. From this hotel’s oceanfront perch, you’ll soak in views of Hilo Bay or Mauna Kea. Dine on-site at the Queen’s Court, take in live entertainment at the Wai’oli Lounge, and head into charming Hilo to explore its quaint Victorian houses and historic downtown.



Waikoloa Marriott (Available in all Big Island Packages)

Overlooking a serene lagoon on the Kohala Coast, this oceanfront Resort is defined by simple elegance, comfort and warm Hawaiian style. Enjoy ancient Hawaiian fishponds and a weekly luau. This newly renovated hotel lies on 15 acres along the beautiful Kohala Coast fronting the white sand beach of Anaeho’omalu Bay. Guest rooms feature private lanais, air conditioning, in-room coffee service, refrigerators, and cotton robes. This gracious Hawaiian hotel offers ocean view dining, Snorkeling, sunset sails and more.



Island Highlights / Farms / Culinary Connections Include:

Your journey of exploration includes two plus days of touring, taking in the many wonders of this Island with not-to-miss highlights such as the steaming vents of Volcano National Park, Thurston Lava Tube, and lush rain-forest waterfalls. Agricultural experiences created just for Farm Bureau members will allow you to talk directly to the farmers, hear their stories and creative business models, and learn about day-to-day operations in this tropical growing environment. Big Island agricultural life comes alive as you visit some or all of the following island farming operations: **Green Point Anthurium Flower Nursery**, Hawai‘i’s only **Vanilla Farm**, **Hāmākua Springs Farm**, **WOW Farms**, a Macadamia Nut operation, **Hōlualoa Coffee**, **Big Island Abalone**, **Sea-horse**, and **Koya Deep Sea Water Operation**. In addition to being home to an amazing array of diversified agriculture as well as world-renown Kona coffee and macadamia nut production, the Big Island is home to a prolific Ranching Industry. It began with the gift of cattle by Captain Vancouver to King Kamehameha the Great, and thus was born Hawaiian ranching. At **Kahua Ranch** you’ll be sure to meet Paniolo, Hawaiian cowboys, who will share with you rich cultural traditions.

Whether you select just the one island package or your visit to the newest island is in conjunction with another “hop”, you will be overjoyed that you included “The Big Island” in your itinerary!

All dining will emphasize locally grown items and a “farm-to-table” approach.