

Through the Lens... Mercer County Agriculture



Join the Mercer County Farm Bureau for the "Through the Lens" agriculture photo presentation on ...

March 16-18, 2012
St. Charles Center, Carthagena

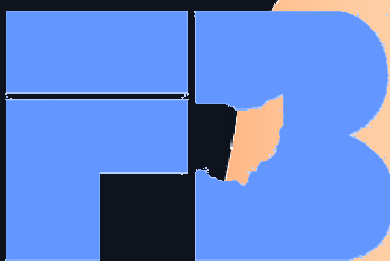
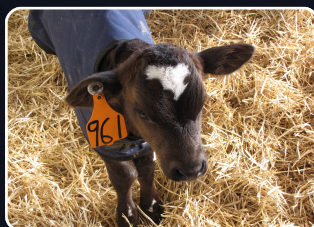
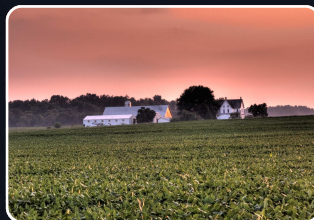
Mercer Co. Farm Bureau is embarking on an exciting project for the spring! The "Through the Lens" photo presentation is a cooperative effort between the Farm Bureau and the Grand Lake Photo Club and will feature photos of Mercer County farms, animals and families to highlight the agrarian heritage of our area. Our hope is to bring to the general public a realistic pictorial view of modern day agriculture in our community.

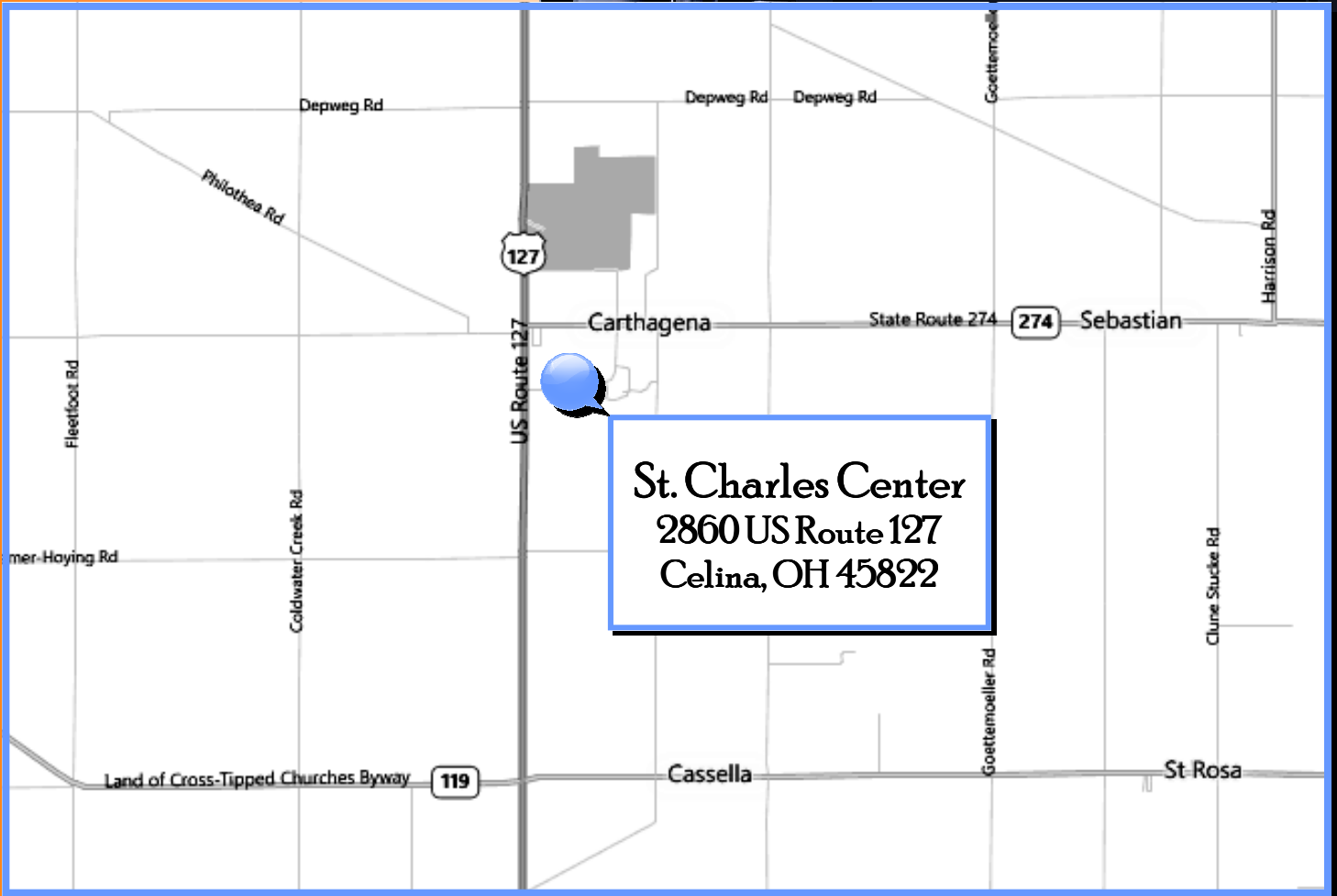
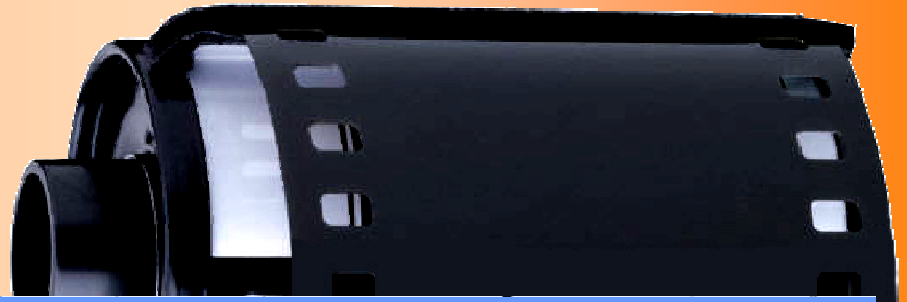
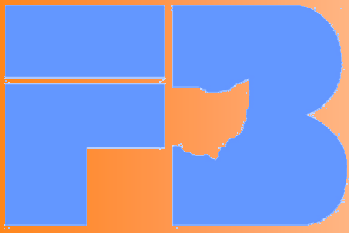
The goal of the exhibit is to enlighten and inspire those who attend about where their food is produced. The event will showcase the pride and hard work that our area farmers put into providing us with quality products using safe agricultural and food processing practices. Hours for the event will be ...

Friday, March 16	7:00-9:00 pm
Saturday, March 17	1:00-7:00 pm
Sunday, March 18	1:00-5:00 pm

"Through the Lens" will be a free and educational program of agricultural photos. For more information call the county Farm Bureau office at 1-877-775-7642.

Join us for this great way to celebrate agriculture!





St. Charles Center
2860 US Route 127
Celina, OH 45822

Through the Lens... Mercer County Agriculture

St. Charles is located in Carthage, Ohio which is 8 miles south of Celina on US Route 127.