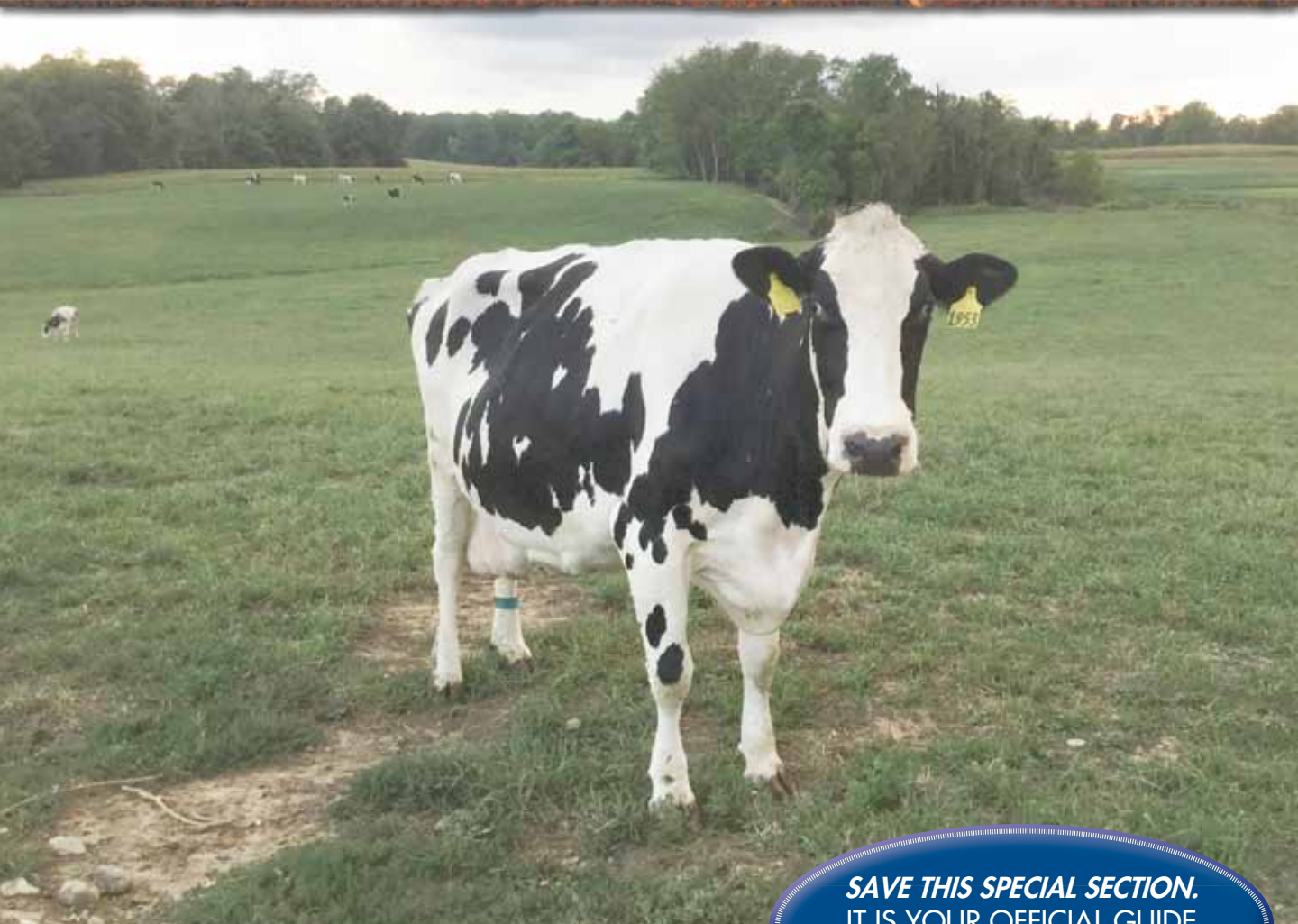


2018

FARM TOUR

A Drive-It-Yourself Tour Of Northern Ashland County

Brought to you by the Ashland County Farm Bureau



SAVE THIS SPECIAL SECTION.
IT IS YOUR OFFICIAL GUIDE
TO THE **FARM TOUR**

Saturday, September 29th • 11am - 6pm

Sunday, September 30th • 12:30pm - 6pm

Once again it is time to take to the rural byways of northern Ashland County to enjoy the beauty and bounty of another harvest. The Ashland County Farm Bureau invites you to spend a weekend visiting local farming operations and see firsthand what is involved in a successful modern farm operation or farm business. Ask questions, observe modern technology and experience an appreciation for the time and effort that today's farmer devotes to producing a steady supply of grain, milk, meat, eggs, fruit, vegetables and fiber for today's consumer. Too many consumers think the food chain begins at the grocery store or the fast-food restaurant, not realizing that it begins with the farmer, who plants the seed, nourishes the crop and harvests the grain. The grain is then processed and used for human consumption or fed to livestock to produce meat, milk and eggs. Today's farmer provides food for himself and 155 others. Remember, inhabitants of the U.S. enjoy the safest, best quality food supply for the least cost of any nation in the world. The bumper sticker "We Farm You Eat" says it all. Each year the Ashland County Farm Bureau is pleased to sponsor and host the Drive-It-Yourself Tour of Family Farms and Businesses in various regions of our scenic county. The farming families of Ashland County are rightfully proud of the concern they show for the animals trusted to their care and for being good stewards of the land and natural resources that help produce the food crops. This event is designed to bridge the gap between farmers and consumers so that everyone better understands and appreciates how the food chain works.

Enjoy the day and drive safely!

Together WITH farmers

Join us on the journey and become a part of preserving farms and protecting natural resources. Become an Ohio Farm Bureau member today.

To join your county Farm Bureau, go to ofbf.org/counties



facebook.com/OhioFarmBureau



twitter.com/OhioFarmBureau





**STOP
#1**



Falling Star Farm was established in Dec. 1962 by Phillip and Shirley Kerr. The Kerr family which included children Lisa, Karen, Russ and Kathy started with 43 Holstein cows farming 160 acres on the original homestead. Karen married Dewey Meyer in 1979 and joined in the dairy farming operation with Phil and Shirley. Fast forward 2018, Dewey and Karen and family own and manage 500 milking Holsteins, farm 600 acres

of corn and 400 acres of hay, and are proud to have the 4th generation growing up on the Falling Star Farm. Ice cream will be offered.

There will be a handicap accessible restroom at this stop

When you're ready to

**PUT DOWN
ROOTS.**

Get the loan you need
to achieve your goals.



Call 330-264-2451
or go to e-farmcredit.com
382 West Liberty St.,
Wooster, OH 44691



ROY TURK

KEVIN TURK

419-289-1051

800-789-1051

FAX 419-281-8280

**1903 ORANGE ROAD,
ASHLAND, OH 44805**

ANGUS218@GMAIL.COM

WWW.TURKBROTHERSMEATS.COM



The Burrow family welcomes you to **Hoofprint Farm**, a small diverse livestock and grain operation, located in northern Ashland County. The farm was purchase in 1972 by Jack and Joan Burrow. Today Bill and Denise Burrow own and manage the farm.

Corn, soybeans and wheat are raised each year on a few hundred acres. Most of the corn is used in livestock feed, made at the farm. Corn is also sold for corn syrup and ethanol. Harvested soybeans are sold for the use of the soybean oil. The byproduct is soybean meal which the farm purchases back to use in livestock feed. The winter wheat is harvested in July and sold for use in baking ingredients. The straw (stalks) is baled for livestock bedding. Hoofprint Farm maintains sound agronomic cropping practices such as crop rotation, drainage tiles, sound nutrient management, use of waterways and cover

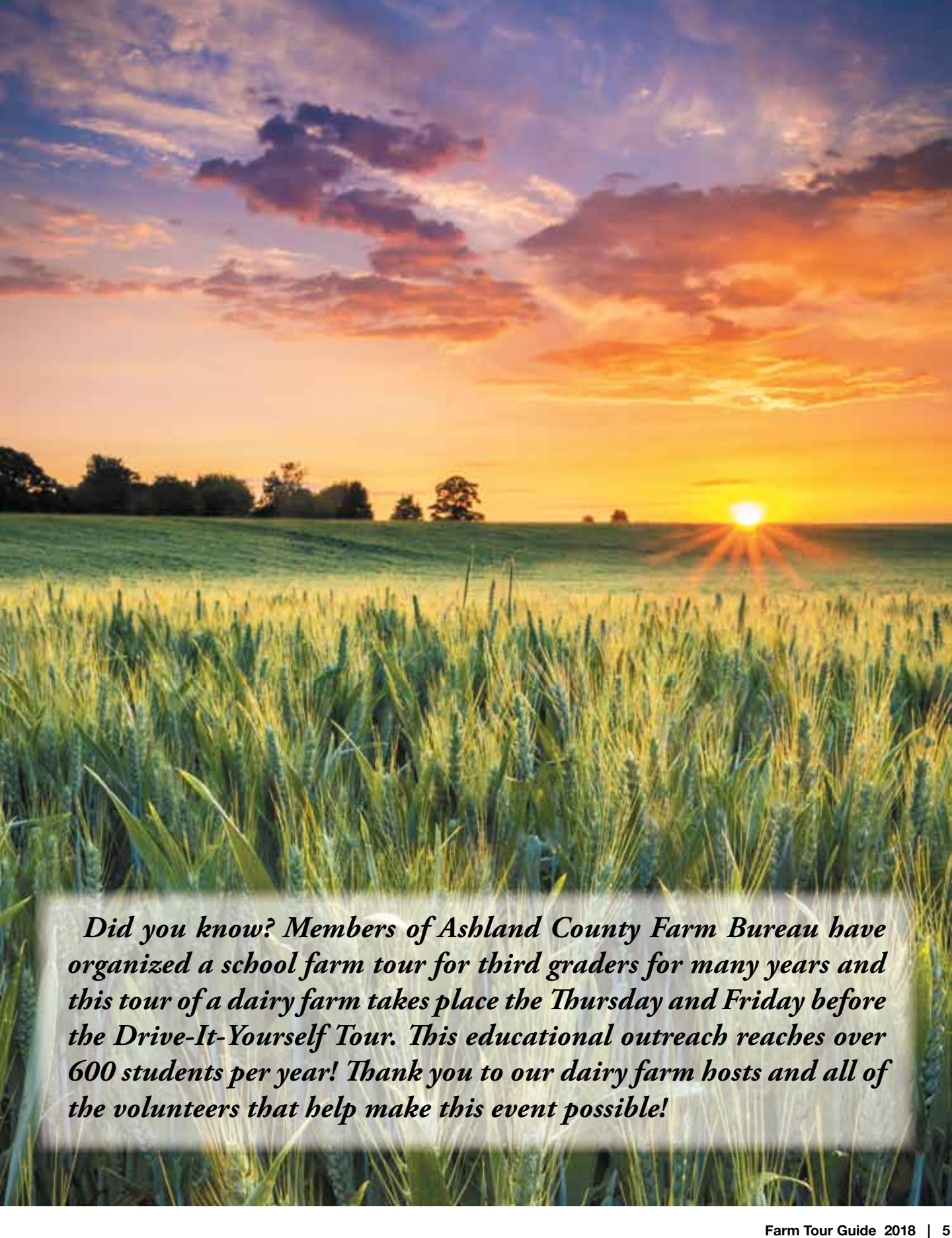
crop implementation.

At this tour stop you will learn about raising a variety of livestock including market hogs, market beef cattle, a small herd of breeding Boer meat goats and a small flock of laying hens.

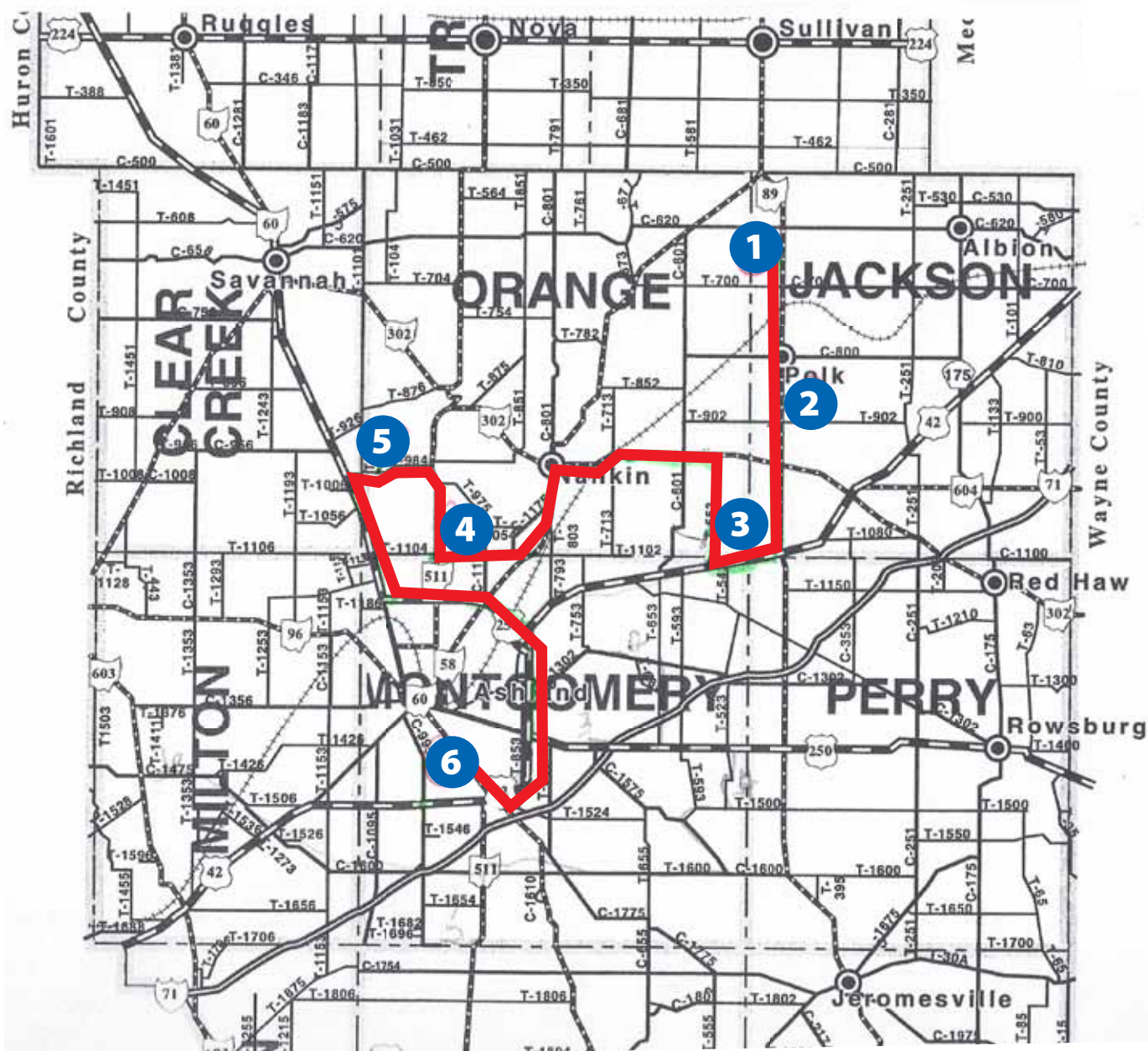
Guests will also be entertained by festive music from an antique Wurlitzer Model 125 band organ owned by Craig Wiley of Polk. These self-playing instruments originally provided music for carousels and skating rinks. Today many of the surviving ones are in the hands of private collectors. This particular organ dates from the mid-1920s and at one time traveled with a carnival in South Dakota. The distinctive sound of "merry-go-round" music appeals to people of all ages and has been called "the happiest music on earth".

This stop will feature pork and goat products.





Did you know? Members of Ashland County Farm Bureau have organized a school farm tour for third graders for many years and this tour of a dairy farm takes place the Thursday and Friday before the Drive-It-Yourself Tour. This educational outreach reaches over 600 students per year! Thank you to our dairy farm hosts and all of the volunteers that help make this event possible!



FOOD AVAILABLE

#1) Falling Star Farm: Ice cream

#2) Hoofprint Farm: Pork and goat products

#3) Katotawa Farm: No food available at this stop

#4) Wesner Farm: Maple Grove Church pork trailer

#5) Wynn's Registered Angus: Ashland County Cattlemen's ribeye sandwiches and burgers

#6) Freer Field: food by Charcoal Mafia



STOP
#3

Katotawa Valley Farms, owned by Don and Unie Kettering, is located in the southeast corner of Orange Township. They farm just under 400 acres and have practiced no-till farming for over 40 years. Cover crops are used every year on every acre. They raise corn, beans, wheat, hay, and three acres of wine grapes which are sold to Rittman Orchard in Doylestown.

In 2014, they installed a solar system which produces 90%

of their electrical needs.

At this stop you will see a dry-dam waterway to control runoff from near-by fields. This was installed in the 1980's. You will also have an opportunity to enjoy a professionally managed woods owned by Bob and Meg Heister.

This location is on Township Road 553 near Route 42. Signs will guide you to the woods.



419-281-0575 www.moritzmaterials.com



The Loudonville Farmers Equity

Celebrates

103 Years of Service

From One Generation to Another

Serving the area since 1915



514 West Main Street • Loudonville, OH
(419) 994-4186 • (800) 624-4811



419-368-7131

469 County Road 30-A
Jeromesville, OH 44840

Open Tuesday - Friday 8 am to 5 pm
Saturdays 8 am to 2 pm

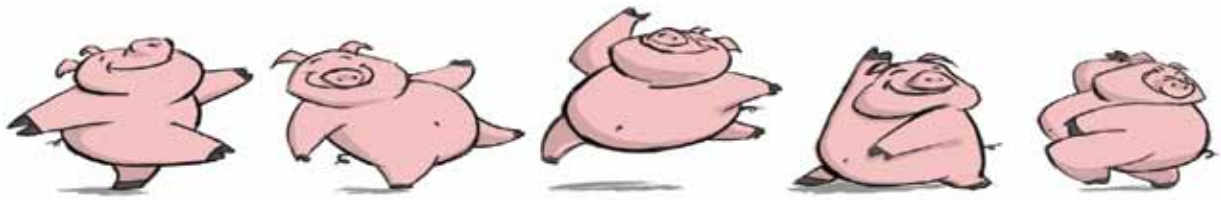
Closed Sundays & Mondays

**STOP
#4**

The Wesner Farm has been in operation for three generations at their home on State Route 511 in Ashland, Ohio, and a total of 6 generations of farming within Ashland county. Partners, Richard and Helen Wesner, along with (son) Martin and Jennifer Wesner, own the farm. Four of Martin and Jennifer's daughters- Cassie, Brooke, Megan, and Emily also are involved with the farm. The family farm is approximately 1,900 acres and produces corn, soybeans, and wheat. In addition to farming, Richard has been a long-time Pioneer seed dealer since 1969. Martin started helping with the seed business in 1997. Over a decade ago, Richard passed the reins of Wesner Seed Sales onto Martin. Additionally, Martin is the co-owner of Ashland Crop Services, a

custom application business, also ran out of the family farm.

Daughters, Megan and Emily, own and operate M & E show pigs from the farm as well. They may even have some piglets on display for the farm tour! In addition, several restored antique tractors will be on display. Exotic animal mounts from Richard's explorations will also be available to view. Visitors may even have the opportunity to experience combine rides depending on the weather and crop. Including the farm machinery and mounts on display, the famous Maple Grove Church Pork Trailer will be at the Wesner Farm. Be sure to stop by to enjoy some delicious food, a wide variety of agricultural experiences, and most importantly, a fun family affair!



JONES LIVESTOCK

****YOU CALL, WE
HAUL!!****

**BUYER OF: HOGS, SOWS AND
BOARS**

271 ST RT 250 JEROMESVILLE, OH 44840

JEFF: 419-651-3878 BOB: 419-651-2407





STOP
#5



Wynn's Registered Angus is a purebred cow/calf operation run by the father/son team of Kurt and Jared Wynn, along with wives Karen and Shelby. What started as an FFA project in 1979 has now blossomed to 60 mature cows. The 100% artificial insemination and embryo transfer breeding program allows the Wynn's to utilize the most sought after genetics in the country. The primary focus is on the sale of yearling bulls, but the Wynn's also develop their own replacement heifers and offer a select group of females for sale privately in the fall.

Kurt and Jared, along with Kurt's brother Kevin and father

Norm, also grain farm in northern Ashland county. The crop farm consists of corn, soybeans, hay, wheat, and speltz.

Please join the Wynn's at the home of Jared and Shelby for a tour of the farming operation. Feel free to walk through the cow/calf pairs grazing the pasture or pick out the best bull or replacement heifer from the group of already weaned calves. The Ashland County Cattlemen's will have the beef trailer available on site with delicious hamburgers and ribeye sandwiches.

Farm | Home | Auto | Business



John Kinkopf
Eric Haudenschild
Matt Stewart

**COME
GROW WITH US**

Loudonville • Millersburg • Wooster

419.994.5555

haudenschildagency.com



Ashland County Park District is currently made up of 17 unique and exciting parks. Each park has its own natural features that make it distinct among Ashland County including an old-growth forest, a native grassland, restored wetlands, and spring-fed ponds. There are also miles of hiking trails, playgrounds, fishing ponds, bird-observation decks, river access for canoeing, and even a vintage cider press stored in a historic barn . . . all of which make these parks truly spectacular.

We have over 2,000 acres of parkland, over 30 miles of hiking trails, and two century barns (one at Freer Field and

one at Pine Hill Sauers Farm). Sauers Farm also has a historic 1850's cider press. Our parks also offer 8 man-made fishing ponds, excellent bird watching and wildlife viewing, posted seasonal hunting in select parks, and access to 3 rivers for boating and fishing.

Join us at Freer Field in Ashland on September 29th and 30th for our farm tour stop. We will have various activities including live animals, wagon rides, antique tractors, food by Charcoal Mafia, and more. Enjoy these great activities while observing the breathtaking backdrop of our beautiful park.


SuttonBank[®]
 Old-fashioned Innovation



**Homegrown
Ag Loans**

*Celebrating 140 years
of Ag Lending!*

www.suttonbank.com ~



For your next generation farmer side.

As the #1 farm insurer¹ with over 100 years of agriculture experience, Nationwide[®] can help protect your operation for generations to come.

When you choose Nationwide to protect your operation, you get a company that:

- Understands your business
- Offers affordable solutions tailored to your insurance needs
- Provides expert claims and risk management support
- Helps you protect what matters most

For your many sides, there's Nationwide.
insurance | investments | retirement



Nationwide[®]
is on your side

Give us a call to see how we can help protect your farm or ranch.



Trent Insurance Group
Serving Ashland County and surrounding areas
866-66TRENT
www.trentinsurance.com

¹2016 SNL Financial Report. Based on statutory data. Nationwide and the Nationwide N and Eagle are service marks of Nationwide Mutual Insurance Company. © 2018 Nationwide GPO-0378AQ.1 (03/18) 8331285